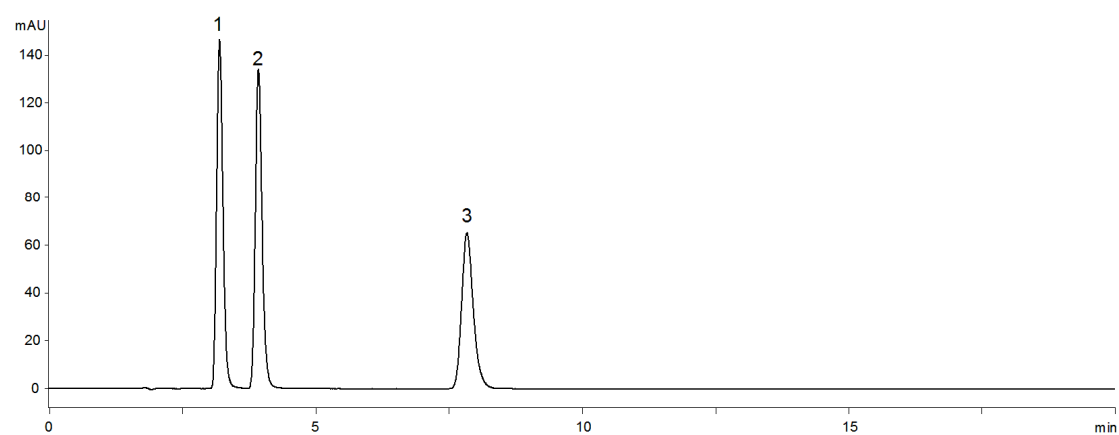


15904



Column: [Gemini® 5 µm C18 110 Å LC Column 150 x 4.6 mm](#)

Part No: [00F-4435-E0](#)

Dimensions: 150 x 4.6 mm ID

Elution Type: Isocratic

Elution A: 0.1% Formic Acid in Water

Elution B: Methanol

Gradient Profile:

Step No.	Time (min)	Pct A	Pct B
1	0	70	30

Flow Rate: 1 mL/min

Col. Temp: ambient

Detection: UV-Vis Abs.-Variable Wave.(UV) @ 254 nm (22°C)

Compounds:

- 1- Sulfathiazole
- 2- Sulfamerazine
- 3- Sulfamethoxazole