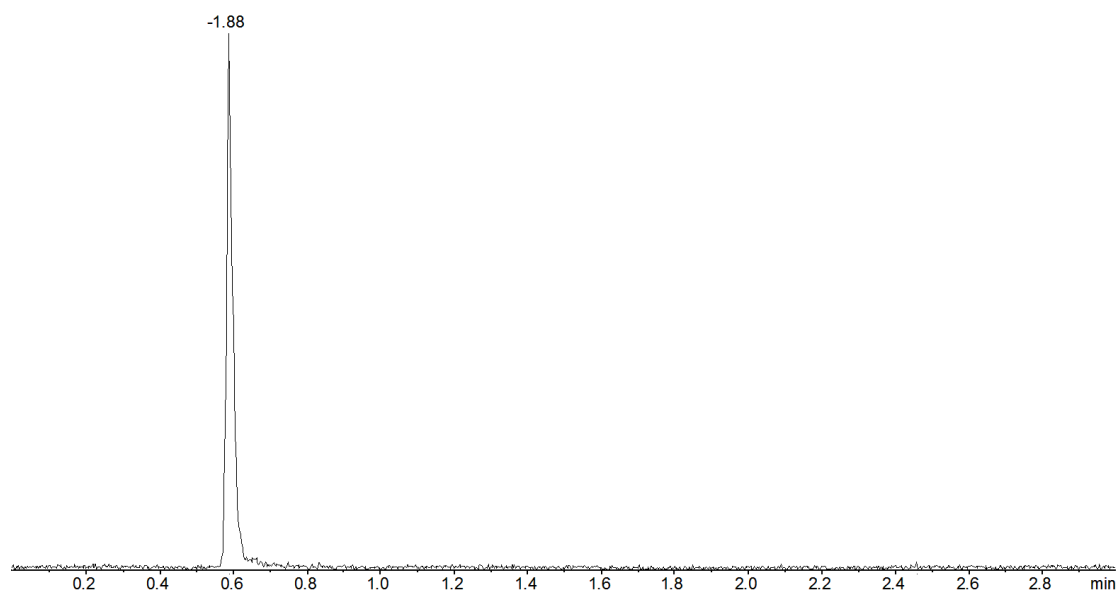


16343



**Column:** [Gemini® 5 µm C18 110 Å LC Column 100 x 2 mm](#)

**Part No:** [00D-4435-B0](#)

**Dimensions:** 100 x 2 mm ID

**Elution Type:** Isocratic

**Elution A:** Acetonitrile with 0.1% Formic Acid

**Elution B:** Water with 0.1% Formic Acid

**Gradient Profile:**

Step No.	Time (min)	Pct A	Pct B
1	0	3	97

**Flow Rate:** 0.4 mL/min

**Col. Temp:** ambient

**Detection:** Mass Spectrometer (MS) @ amu (22°C)

**Compounds:**

1- Ribavirin