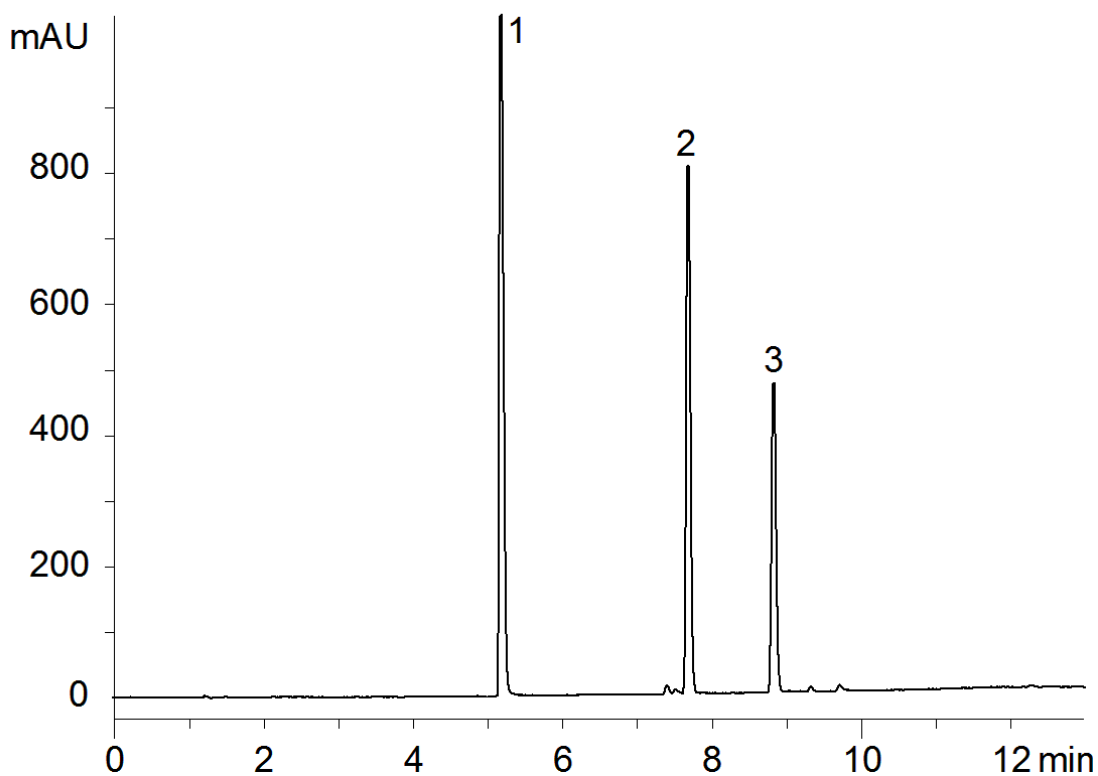


16593



**Column:** [Gemini®-NX 5 µm C18 110 Å LC Column 150 x 4.6 mm](#)

**Part No:** [00F-4454-E0](#)

**Dimensions:** 150 x 4.6 mm ID

**Elution Type:** Gradient

**Elution A:** 0.1% Formic acid in water

**Elution B:** 0.1% Formic acid in ACN

**Gradient Profile:**

| Step No. | Time (min) | Pct A | Pct B |
|----------|------------|-------|-------|
| 1        | 0          | 95    | 5     |
| 2        | 10         | 5     | 95    |
| 3        | 12         | 5     | 95    |

**Flow Rate:** 1.5 mL/min

**Col. Temp:** ambient

**Detection:** UV-Vis Abs.-Variable Wave.(UV) @ 254 nm (22°C)

**Compounds:**

- 1- Amitriptyline
- 2- Naproxen
- 3- Toluene