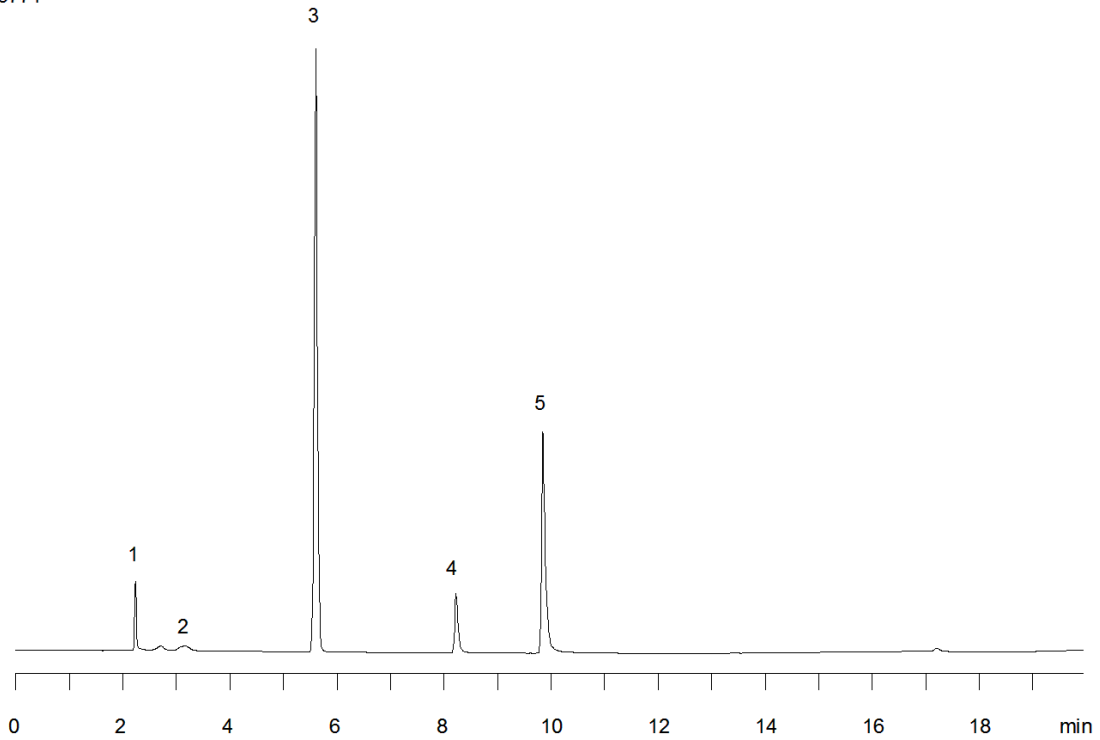


16771



**Column:** [Gemini® 5 µm C18 110 Å LC Column 150 x 4.6 mm](#)

**Part No:** [00F-4435-E0](#)

**Dimensions:** 150 x 4.6 mm ID

**Elution Type:** Gradient

**Elution A:** 10 mM Phosphate Buffer, pH 2.5

**Elution B:** Acetonitrile

**Gradient Profile:**

Step No.	Time (min)	Pct A	Pct B
1	0	95	5
2	15	40	60
3	17	40	60
4	17.01	95	5
5	20	95	5

**Flow Rate:** 1 mL/min

**Col. Temp:** ambient

**Detection:** UV-Vis Abs.-Diode Array (PDA) @ 280 nm (22°C)

**Compounds:**

- 1- Phenylephrine
- 2- Maleic Acid
- 3- Acetaminophen
- 4- Chlorpheniramine
- 5- Dextromethorphan