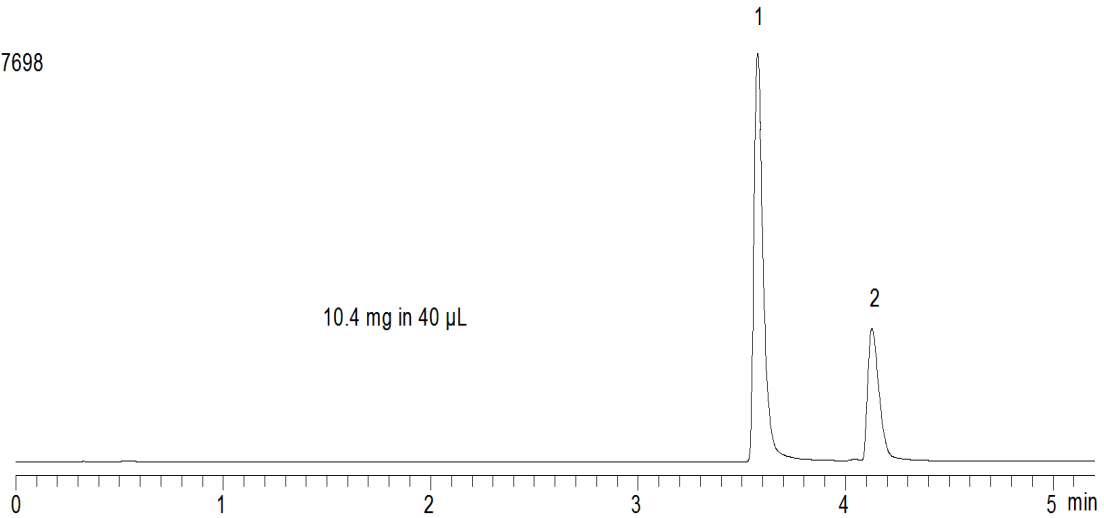


17698



**Column:** [Gemini®-NX 5 µm C18 110 Å LC Column 50 x 21.2 mm, AXIA Packed](#)

**Part No:** [00B-4454-P0-AX](#)

**Dimensions:** 50 x 21.2 mm ID

**Elution Type:** Gradient

**Elution A:** 0.2 % NH<sub>4</sub>OH in Water

**Elution B:** Acetonitrile

**Gradient Profile:**

Step No.	Time (min)	Pct A	Pct B
1	0	95	5
2	5	5	95

**Flow Rate:** 30 mL/min

**Col. Temp:** ambient

**Detection:** UV-Vis Abs.-Variable Wave.(UV) @ 254 nm (22°C)

**Compounds:**

1- Diphenhydramine

2- Propranolol