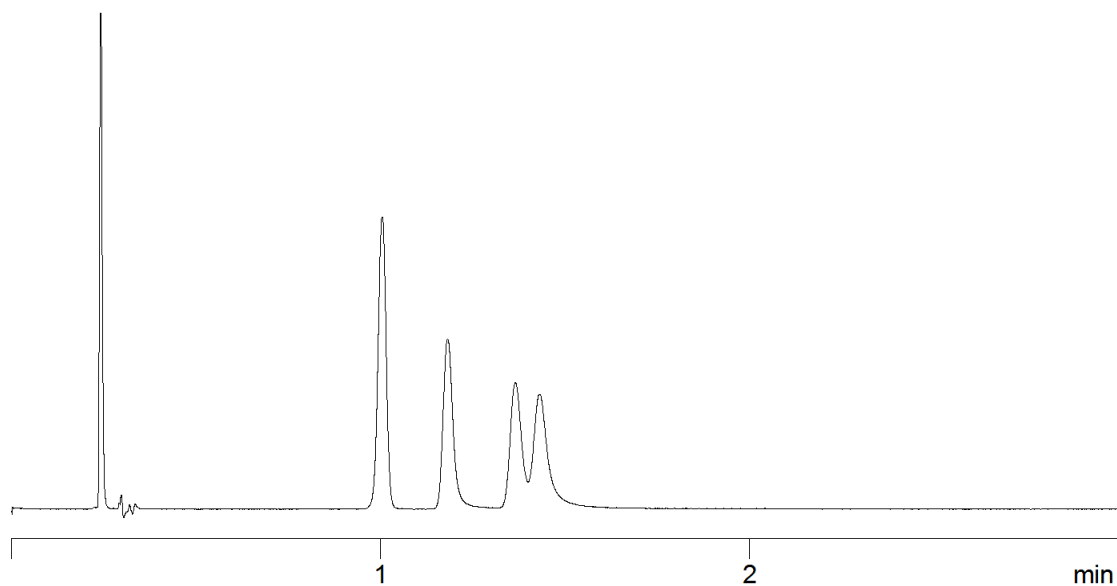


18890



Column: [Kinetex™ 2.6 µm HILIC 100 Å LC Column 50 x 4.6 mm](#)

Part No: [00B-4461-E0](#)

Dimensions: 50 x 4.6 mm ID

Elution Type: Isocratic

Elution A: 90/10 ACN/100mM NH₄ formate pH 3.2

Gradient Profile:

Step No.	Time (min)	Pct A
1	0	100

Flow Rate: 2 mL/min

Col. Temp: 25 °C

Detection: UV-Vis Abs.-Diode Array (PDA) @ 270 nm (25°C)

Compounds:

- 1- Serotonin
- 2- Dopamine
- 3- Epinephrine
- 4- Norepinephrine