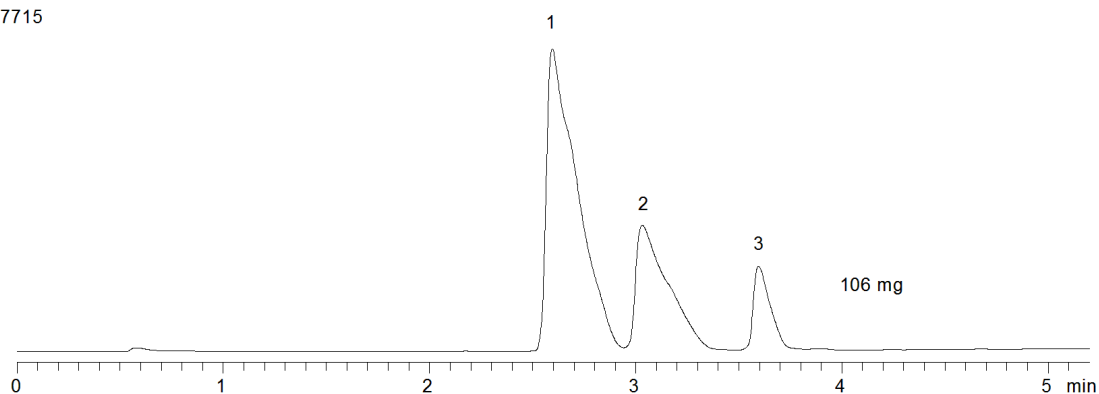


17715



**Column:** [Gemini® 5 µm C18 110 Å LC Column 50 x 21.2 mm, AXIA Packed](#)

**Part No:** [00B-4435-P0-AX](#)

**Dimensions:** 50 x 21.2 mm ID

**Elution Type:** Gradient

**Elution A:** 0.5 % TFA in Water

**Elution B:** Acetonitrile

**Gradient Profile:**

Step No.	Time (min)	Pct A	Pct B
1	0	95	5
2	5	5	95

**Flow Rate:** 30 mL/min

**Col. Temp:** ambient

**Detection:** UV-Vis Abs.-Variable Wave.(UV) @ 254 nm (22°C)

**Compounds:**

- 1- Diphenhydramine
- 2- Oxybutynin
- 3- Terfenadine