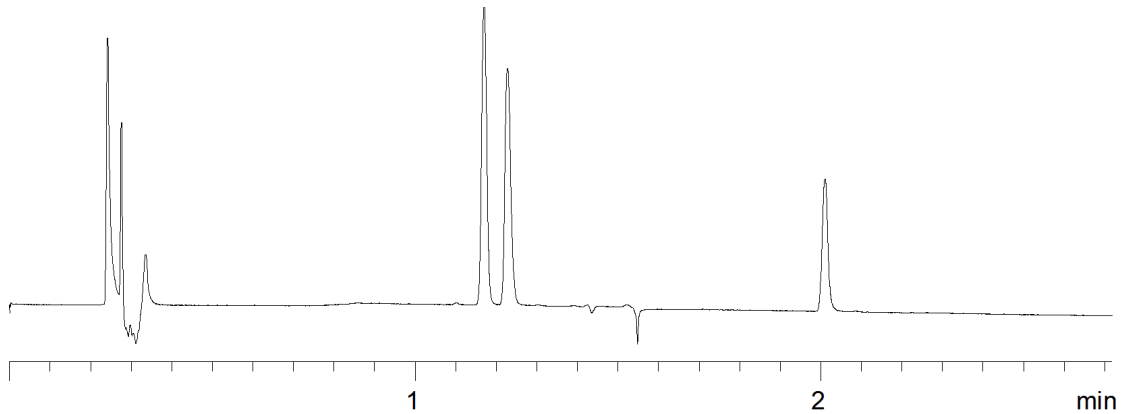


18882



Column: [Kinetex™ 2.6 µm HILIC 100 Å LC Column 50 x 4.6 mm](#)

Part No: [00B-4461-E0](#)

Dimensions: 50 x 4.6 mm ID

Elution Type: Gradient

Elution A: 90/10 Acetonitrile/100mM Ammonium Formate pH 3.2

Elution B: 50/50 Acetonitrile/20mM Ammonium Formate pH 3.2

Gradient Profile:

Step No.	Time (min)	Pct A	Pct B
1	0	100	0
2	0.22	100	0
3	2.72	0	100
4	2.73	100	0
5	5.22	100	0

Flow Rate: 2 mL/min

Col. Temp: ambient

Detection: UV-Vis Abs.-Diode Array (PDA) @ 260 nm (22°C)

Compounds:

- 1- Normorphine
- 2- morphine
- 3- Morphine-3-b-glucuronide