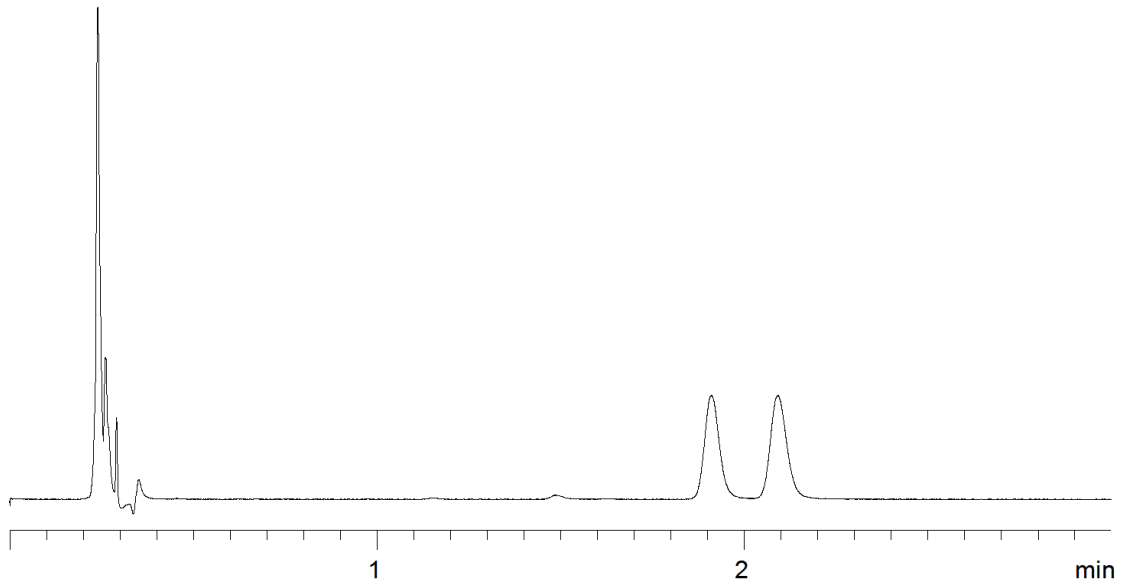


18881



**Column:** [Kinetex™ 2.6 µm HILIC 100 Å LC Column 50 x 4.6 mm](#)

**Part No:** [00B-4461-E0](#)

**Dimensions:** 50 x 4.6 mm ID

**Elution Type:** Gradient

**Elution A:** 90/10 ACN/100mM NH<sub>4</sub> acetate pH 5.8

**Gradient Profile:**

Step No.	Time (min)	Pct A
1	0	100

**Flow Rate:** 2 mL/min

**Col. Temp:** 25 °C

**Detection:** UV-Vis Abs.-Diode Array (PDA) @ 270 nm (25°C)

**Compounds:**

- 1- Normetanephine
- 2- Metanephine