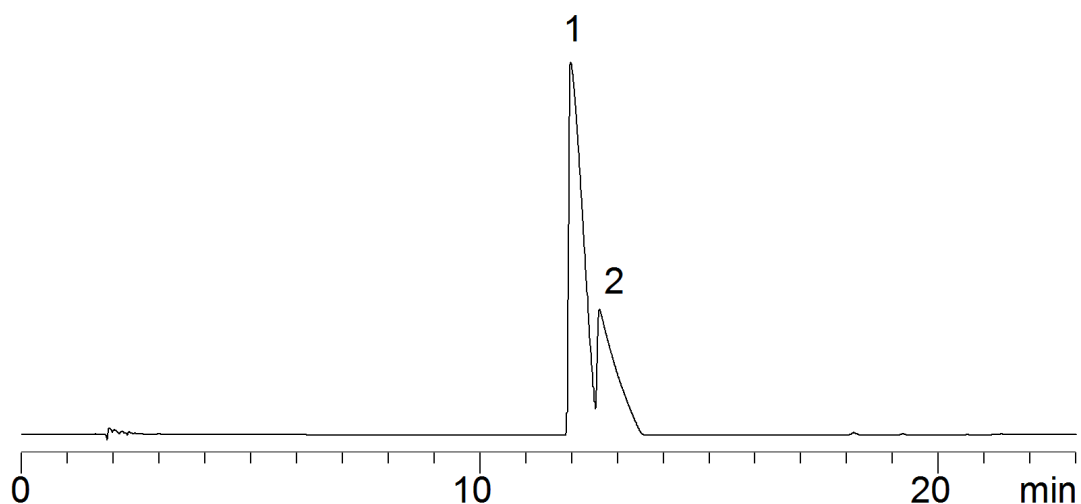


18078



**Column:** [Gemini®-NX 5 µm C18 110 Å LC Column 250 x 21.2 mm, AXIA Packed](#)

**Part No:** [00G-4454-P0-AX](#)

**Dimensions:** 250 x 21.2 mm ID

**Elution Type:** Gradient

**Elution A:** Acetonitrile

**Elution B:** 0.5% TFA in Water

**Gradient Profile:**

Step No.	Time (min)	Pct A	Pct B
1	0	5	95
2	25	95	5

**Flow Rate:** 30 mL/min

**Col. Temp:** ambient

**Detection:** UV-Vis Abs.-Variable Wave.(UV) @ nm (22°C)

**Compounds:**

1- Propanolol

2- Diphenhydramine