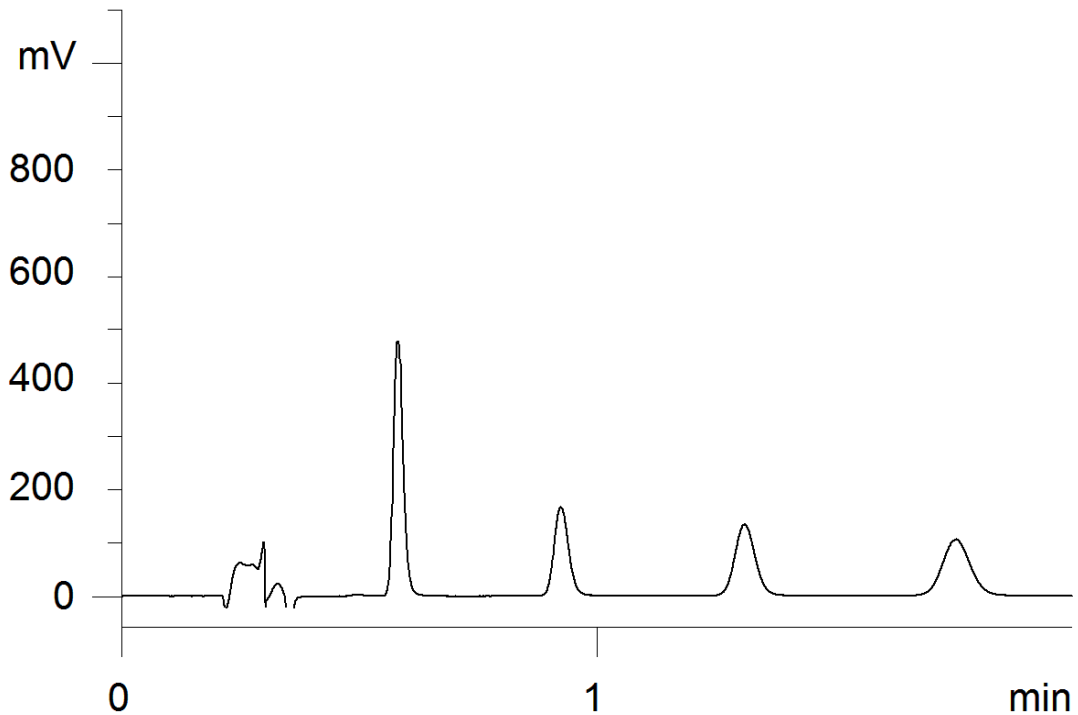


18222



Column: [Gemini®-NX 5 µm C18 110 Å LC Column 50 x 2 mm](#)

Part No: [00B-4454-B0](#)

Dimensions: 50 x 2 mm ID

Elution Type: Isocratic

Elution A: Water

Elution B: Acetonitrile

Gradient Profile:

Step No.	Time (min)	Pct A	Pct B
1	0	50	50

Flow Rate: 0.5 mL/min

Col. Temp: 25 °C

Detection: UV-Vis Abs.-Variable Wave.(UV) @ 254 nm (25°C)

Compounds:

- 1- Uracil
- 2- Acetophenone
- 3- Benzene
- 4- Toluene
- 5- Naphthalene