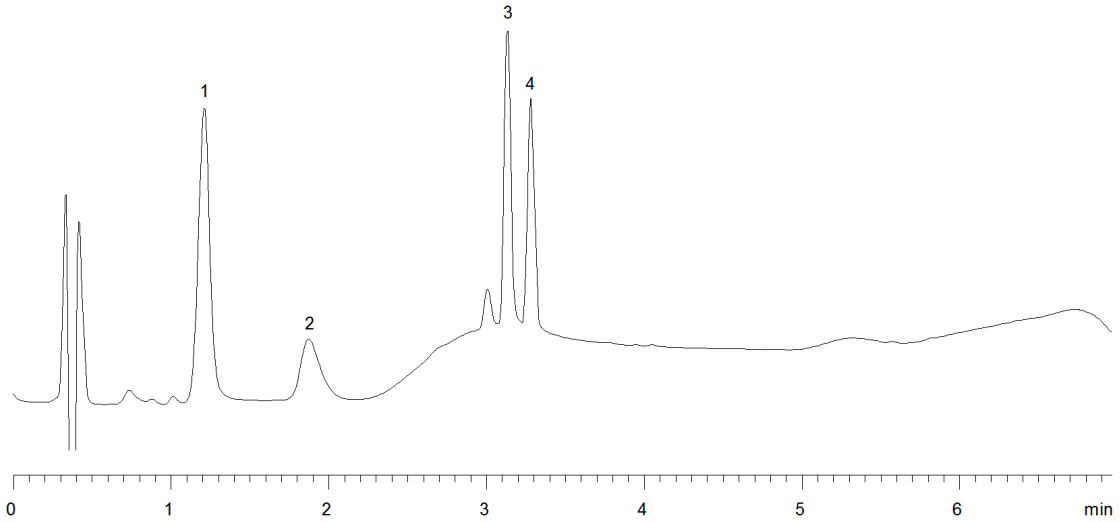


18465



**Column:** [Gemini® 3 µm C18 110 Å, LC Column 50 x 2 mm, Ea](#)

**Part No:** [00B-4439-B0](#)

**Dimensions:** 50 x 2 mm ID

**Elution Type:** Gradient

**Elution A:** 0.1% Formic acid in water

**Elution B:** 0.1% Formic acid in 75:25 acetonitrile:methanol

**Gradient Profile:**

Step No.	Time (min)	Pct A	Pct B
1	0	70	30
2	1	30	70
3	3	30	70
4	3.01	5	95
5	4	5	95

**Flow Rate:** 0.4 mL/min

**Col. Temp:** ambient

**Detection:** UV-Vis Abs.-Variable Wave.(UV) @ 210 nm (22°C)

**Compounds:**

- 1- Leukomalachite Green
- 2- Malachite Green
- 3- Crystal violet
- 4- Brilliant Green