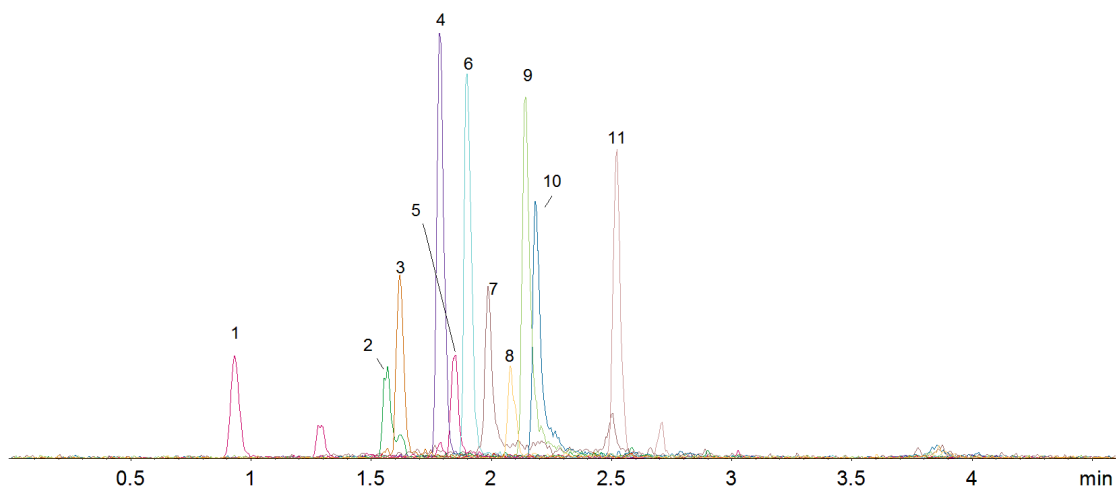


18848



Column: [Kinetex™ 2.6 µm C18 100 Å LC Column 50 x 2.1 mm](#)

Part No: [00B-4462-AN](#)

Dimensions: 50 x 2.1 mm ID

Elution Type: Gradient

Elution A: 0.1%FA in H₂O

Elution B: 0.1%FA in Acetonitrile

Gradient Profile:

Step No.	Time (min)	Pct A	Pct B
1	0	80	20
2	2.5	20	80
3	2.51	5	95
4	2.8	5	95
5	2.81	80	20
6	4.6	80	20

Flow Rate: 450 µL/min

Col. Temp: 25 °C

Detection: Mass Spectrometer (MS) @ amu (22°C)

Compounds:

- 1- Triamcinolone
- 2- Prednisolone
- 3- Cortisone
- 4- Betamethasone
- 5- Corticosterone
- 6- Triamcinolone acetonide
- 7- 11-alpha-Hydroxyprogesterone
- 8- Cortisone acetate
- 9- Testosterone
- 10- 11-Ketoprogesterone
- 11- Betamethasone 17-valerate