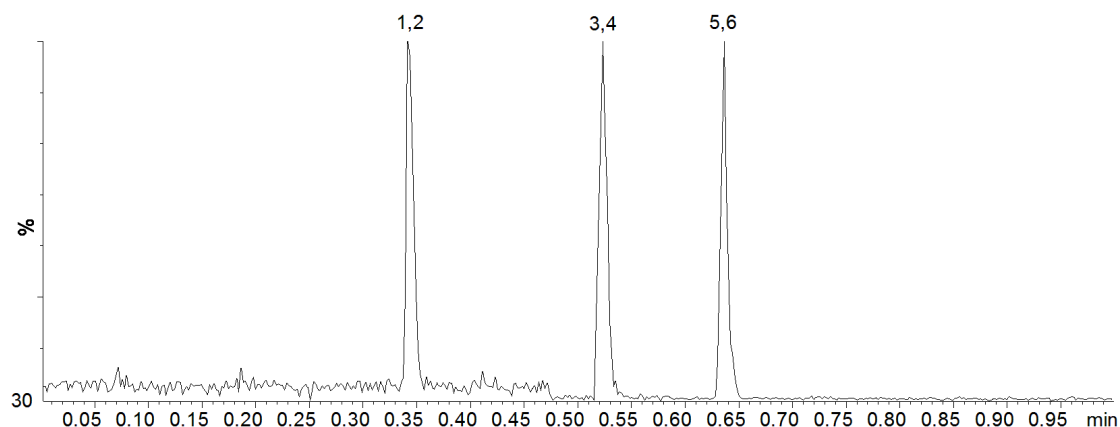


18622



**Column:** [Kinetex™ 2.6 µm C18 100 Å LC Column 50 x 2.1 mm](#)

**Part No:** [00B-4462-AN](#)

**Dimensions:** 50 x 2.1 mm ID

**Elution Type:** Gradient

**Elution A:** 0.1% Formic acid in H<sub>2</sub>O

**Elution B:** 0.1% Formic acid in ACN

**Gradient Profile:**

Step No.	Time (min)	Pct A	Pct B
1	0	90	10
2	1	5	95
3	1.4	5	95
4	1.41	5	95
5	2	90	10

**Flow Rate:** 1 mL/min

**Col. Temp:** 25 °C

**Detection:** Mass Spectrometer (MS) @ amu (110°C)

**Compounds:**

- 1- 6-MAM
- 2- d3-6-MAM
- 3- PCP
- 4- d5-PCP
- 5- Methadone
- 6- d9-Methadone