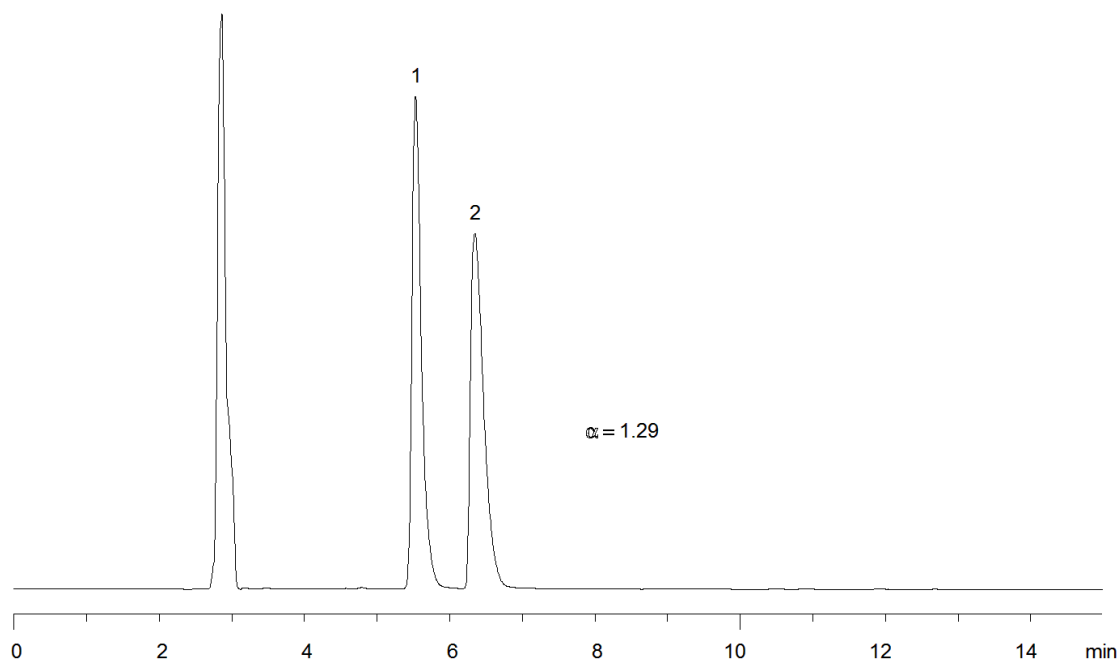


18686



Column: [Lux® 5u Cellulose-2, LC Column 250 x 4.6 mm, Ea](#)

Part No: [00G-4457-E0](#)

Dimensions: 250 x 4.6 mm ID

Elution Type: Isocratic

Elution A: Acetonitrile

Elution B: 20mM Ammonium acetate

Gradient Profile:

Step No.	Time (min)	Pct A	Pct B
1	10	60	40

Flow Rate: 1 mL/min

Col. Temp: ambient

Detection: UV-Vis Abs.-Variable Wave.(UV) @ 220 nm (22°C)

Compounds:

1- Nomifensine

2- Nomifensine