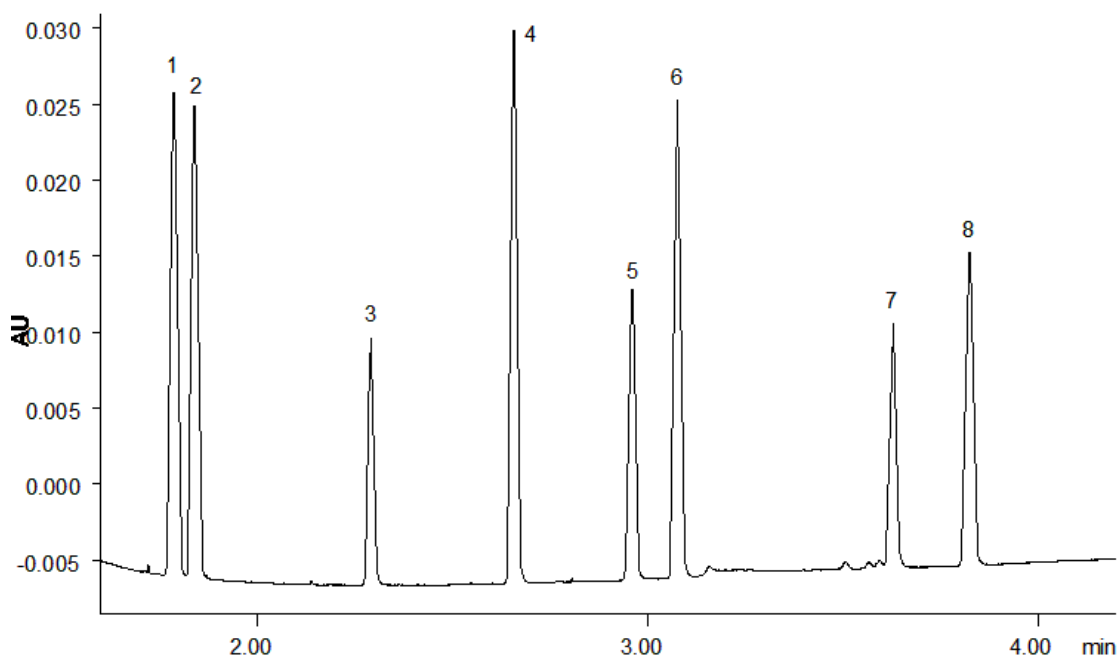


19804



Column: [Kinetex 1.7 \$\mu\$ m XB-C18 100 \$\text{\AA}\$ 150 x 2.1 mm LC Column](#)

Part No: [00F-4498-AN](#)

Dimensions: 150 x 2.1 mm ID

Elution Type: Gradient

Elution A: MilliQ Water

Elution B: Acetonitrile

Gradient Profile:

Step No.	Time (min)	Pct A	Pct B
1	0	70	30
2	5	0	100

Flow Rate: 0.5 mL/min

Col. Temp: ambient

Detection: UV-Vis Abs.-Variable Wave.(UV) @ 210 nm (22°C)

Compounds:

- 1- Hydrocortisone
- 2- Cortisone
- 3- Corticosterone
- 4- Cortisone-21-Acetate
- 5- Dehydroepiandrosterone
- 6- 17-Hydroxyprogesterone
- 7- Deoxycorticosterone
- 8- Progesterone