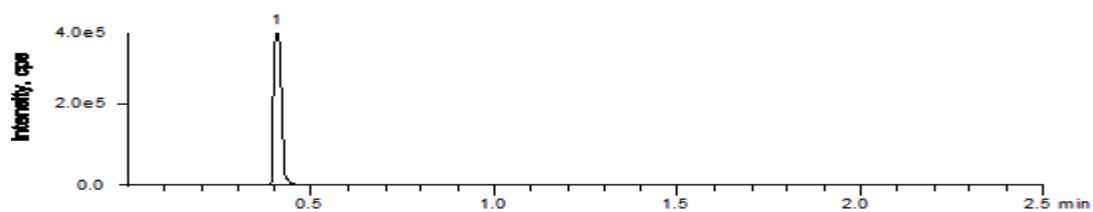
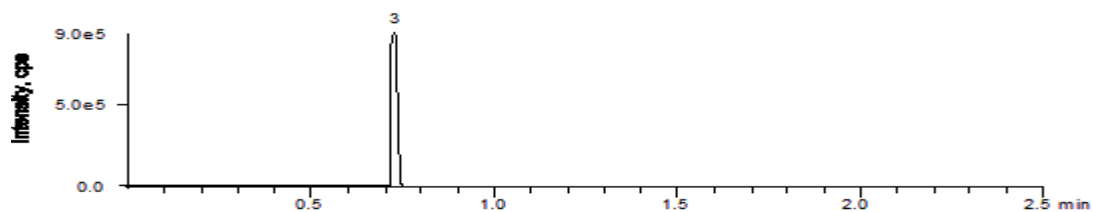
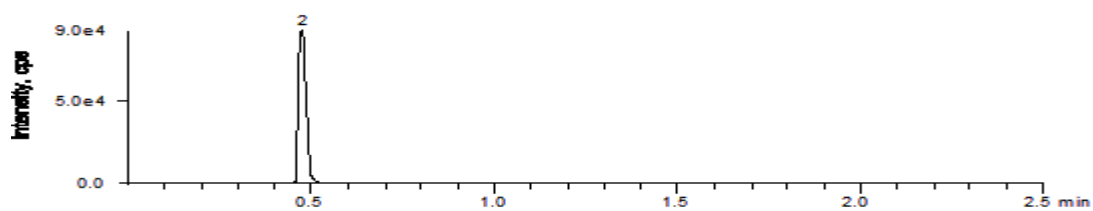


19944



Column: [Kinetex™ 2.6 µm C18 100 Å LC Column 50 x 2.1 mm](#)

Part No: [00B-4462-AN](#)

Dimensions: 50 x 2.1 mm ID

Elution Type: Gradient

Elution A: 0.1% formic acid in acetonitrile

Elution B: 0.1% formic acid

Gradient Profile:

Step No.	Time (min)	Pct A	Pct B
1	0	5	95
2	0.25	5	95
3	1.8	90	10
4	1.9	90	10
5	1.91	5	95
6	2.5	5	95

Flow Rate: 0.8 mL/min

Col. Temp: 40 °C

Detection: Mass Spectrometer (MS) @ amu (22°C)

Compounds:

- 1- Cimetidine
- 2- Acetaminophen
- 3- Pindolol