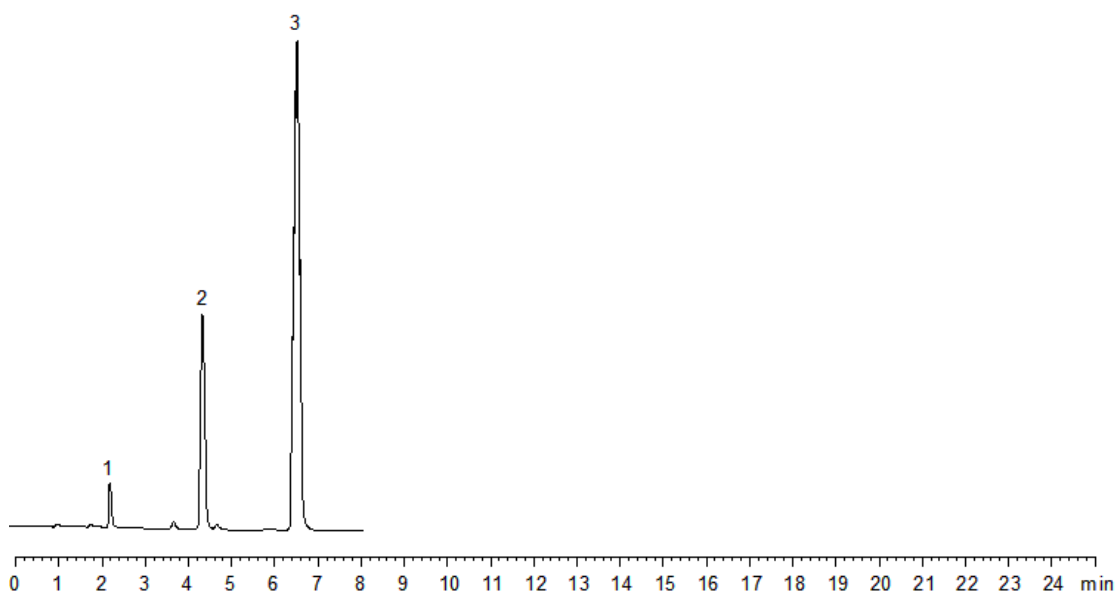


19950



**Column:** [Kinetex™ 2.6 µm C8 100 Å LC Column 100 x 2.1 mm](#)

**Part No:** [00D-4497-AN](#)

**Dimensions:** 100 x 2.1 mm ID

**Elution Type:** Isocratic

**Elution A:** 50:50 Acetonitrile:Water

**Gradient Profile:**

Step No.	Time (min)	Pct A
1	10	100

**Flow Rate:** 0.3 mL/min

**Col. Temp:** 25 °C

**Detection:** UV-Vis Abs.-Variable Wave.(UV) @ 200 nm (22°C)

**Compounds:**

- 1- Norethindrone
- 2- Progesterone
- 3- Mestranol