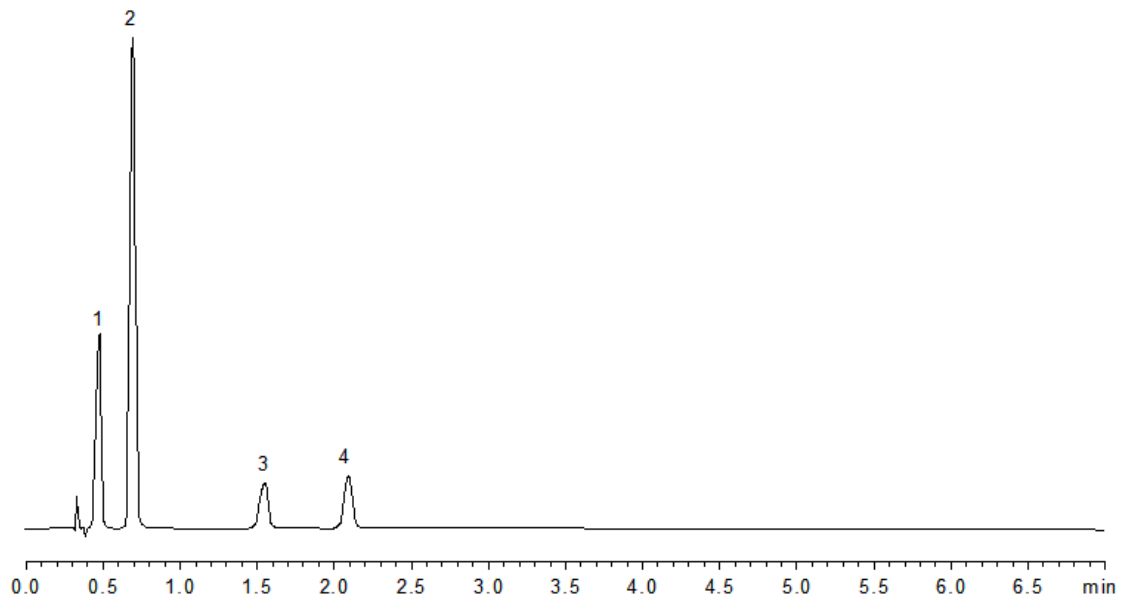


19957



Column: [Kinetex™ 2.6 µm C18 100 Å LC Column 75 x 4.6 mm](#)

Part No: [00C-4462-E0](#)

Dimensions: 75 x 4.6 mm ID

Elution Type: Isocratic

Elution A: 69:28:3 Water:Methanol:Acetic Acid

Gradient Profile:

Step No.	Time (min)	Pct A
1	12	100

Flow Rate: 2 mL/min

Col. Temp: ambient

Detection: UV-Vis Abs.-Variable Wave.(UV) @ 275 nm (22°C)

Compounds:

- 1- Acetaminophen
- 2- Caffeine
- 3- Acetylsalicylic Acid
- 4- Benzoic Acid