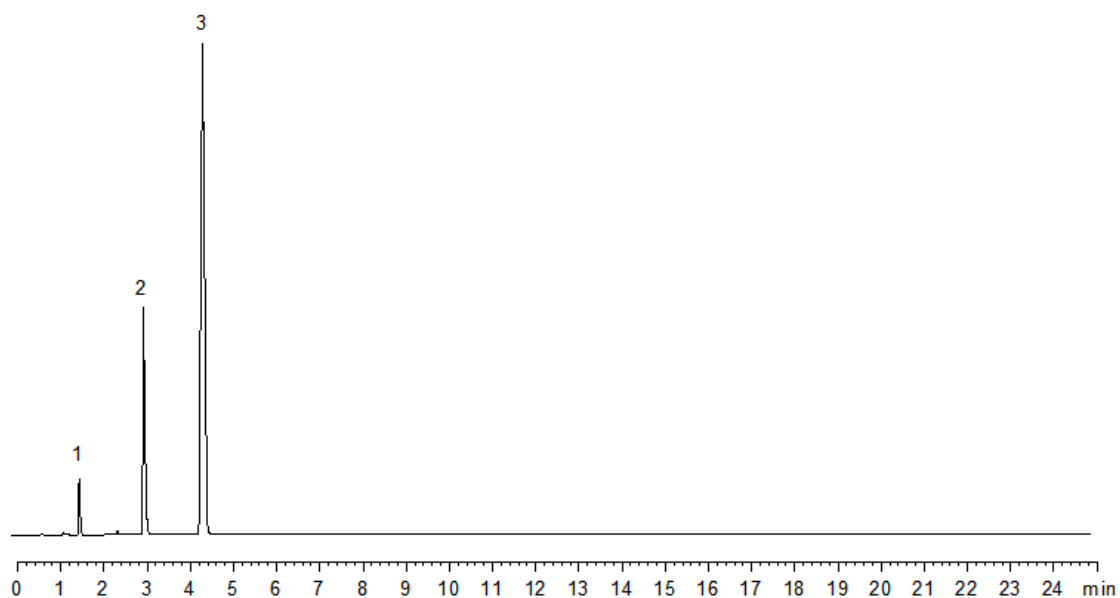


19964



Column: [Kinetex™ 2.6 µm C8 100 Å LC Column 100 x 4.6 mm](#)

Part No: [00D-4497-E0](#)

Dimensions: 100 x 4.6 mm ID

Elution Type: Isocratic

Elution A: 50:50 Acetonitrile:Water

Gradient Profile:

Step No.	Time (min)	Pct A
1	25	100

Flow Rate: 1 mL/min

Col. Temp: 25 °C

Detection: UV-Vis Abs.-Variable Wave.(UV) @ 200 nm (22°C)

Compounds:

- 1- Norethindrone
- 2- Progesterone
- 3- Mestranol