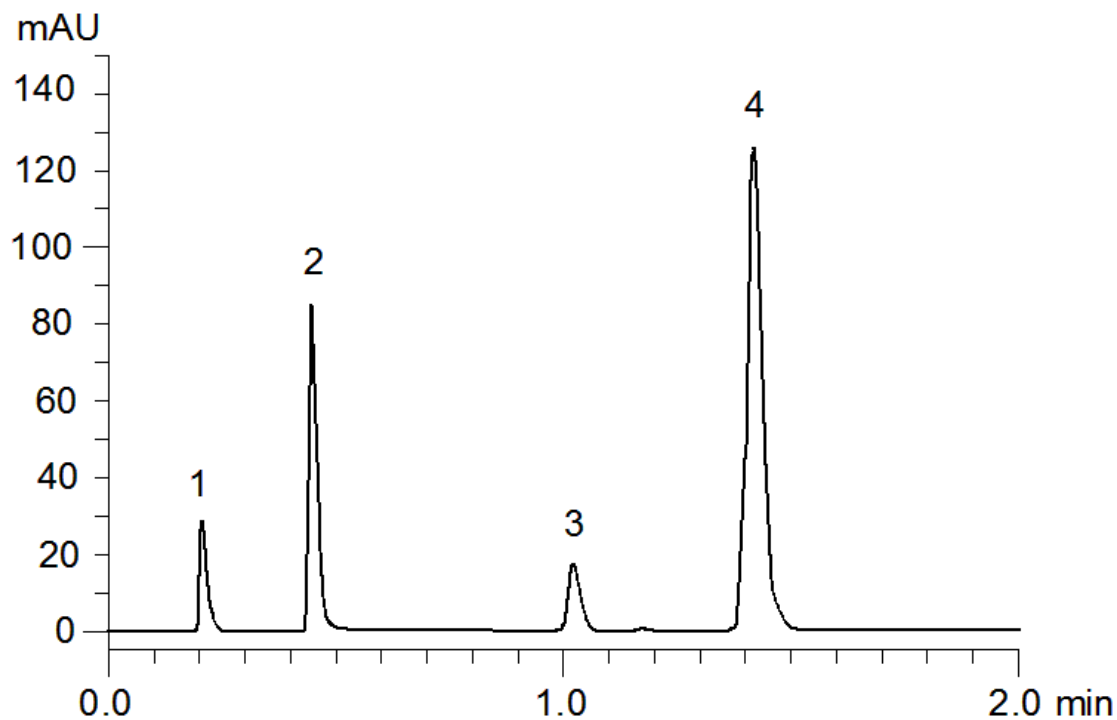


19978



**Column:** [Kinetex™ 2.6 μm XB-C18 100 Å, LC Column 50 x 2.1 mm, Ea](#)  
**Part No:** [00B-4496-AN](#)

**Dimensions:** 50 x 2.1 mm ID

**Elution Type:** Isocratic

**Elution A:** 50

**Elution B:** 50

**Gradient Profile:**

| Step No. | Time (min) | Pct A | Pct B |
|----------|------------|-------|-------|
| 1        | 0          | 100   | 0     |

**Flow Rate:** 0.5 mL/min

**Col. Temp:** ambient

**Detection:** UV-Vis Abs.-Variable Wave.(UV) @ nm (22°C)

**Compounds:**

- 1- Uracil
- 2- Acetophenone
- 3- Toluene
- 4- Naphthalene