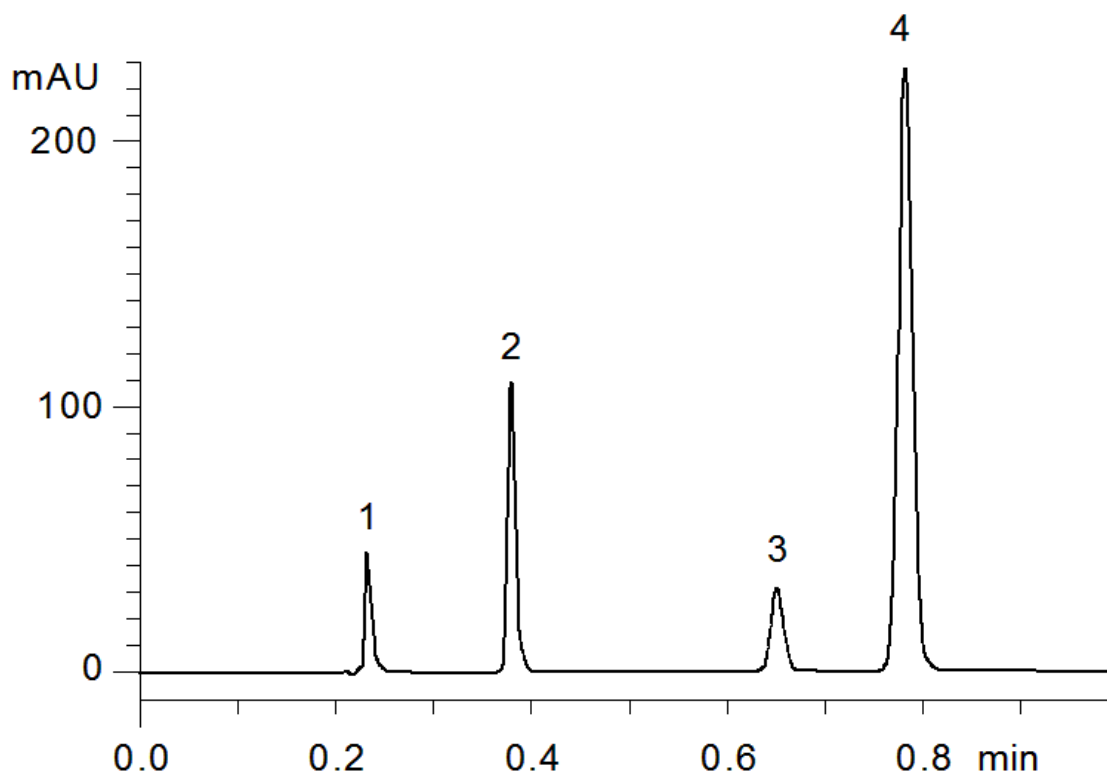


19979



**Column:** [Kinetex™ 2.6 μm XB-C18 100 Å, LC Column 50 x 4.6 mm, Ea](#)

**Part No:** [00B-4496-E0](#)

**Dimensions:** 50 x 4.6 mm ID

**Elution Type:** Isocratic

**Elution A:** Water

**Elution B:** Acetonitrile

**Gradient Profile:**

Step No.	Time (min)	Pct A	Pct B
1	0	35	65

**Flow Rate:** 1.85 mL/min

**Col. Temp:** ambient

**Detection:** UV-Vis Abs.-Diode Array (PDA) @ (22°C)

**Compounds:**

- 1- Uracil
- 2- Acetophenone
- 3- Toluene
- 4- Naphthalene