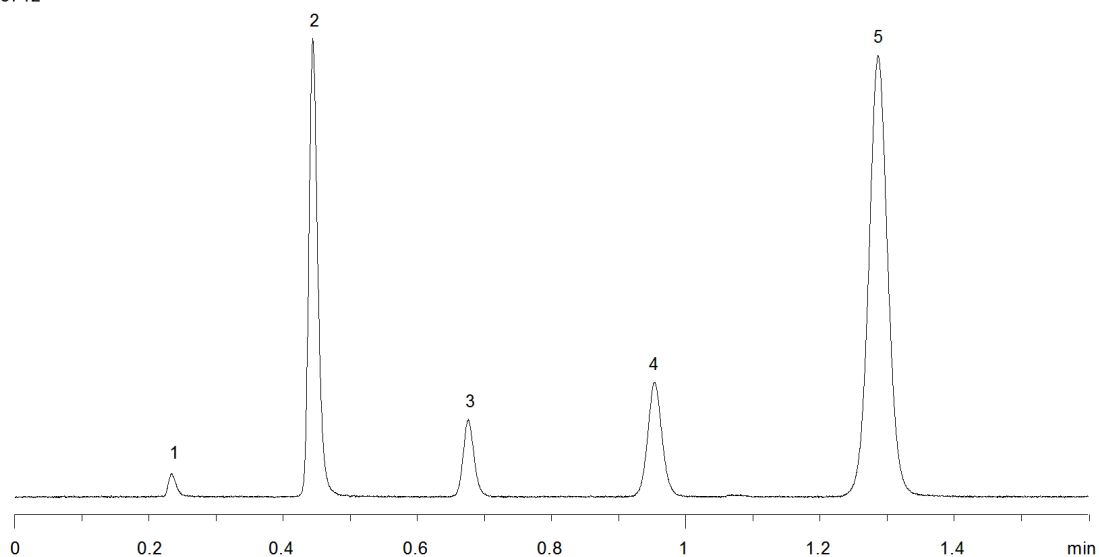


18712



Column: [Kinetex™ 2.6 µm C18 100 Å LC Column 50 x 2.1 mm](#)

Part No: [00B-4462-AN](#)

Dimensions: 50 x 2.1 mm ID

Elution Type: Isocratic

Elution A: Water

Elution B: Acetonitrile

Gradient Profile:

Step No.	Time (min)	Pct A	Pct B
1	0	50	50

Flow Rate: 0.5 mL/min

Col. Temp: 30 °C

Detection: UV-Vis Abs.-Diode Array (PDA) @ 254 nm (22°C)

Compounds:

- 1- Uracil
- 2- Acetophenone
- 3- Benzene
- 4- Toluene
- 5- Naphthalene