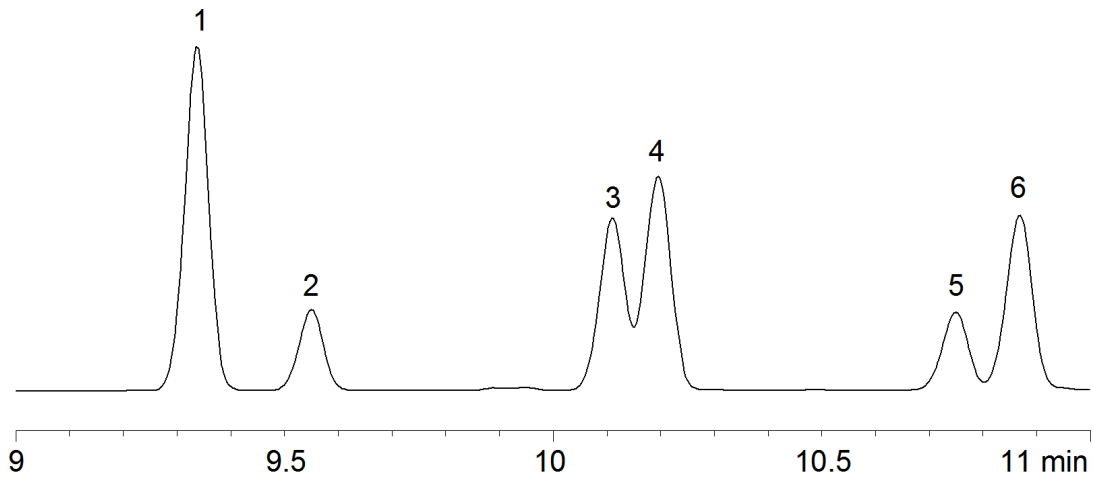


18684



**Column:** [Kinetex™ 2.6 µm C18 100 Å LC Column 150 x 4.6 mm](#)

**Part No:** [00F-4462-E0](#)

**Dimensions:** 150 x 4.6 mm ID

**Elution Type:** Gradient

**Elution A:** Water

**Elution B:** ACN

**Gradient Profile:**

Step No.	Time (min)	Pct A	Pct B
1	0	75	25
2	12	35	65
3	12.1	75	25
4	16	75	25

**Flow Rate:** 1.2 mL/min

**Col. Temp:** ambient

**Detection:** UV-Vis Abs.-Diode Array (PDA) @ 230 nm (30°C)

**Compounds:**

- 1- 11-alpha-Hydroxyprogesterone
- 2- Cortisone acetate
- 3- Estradiol
- 4- 21-Hydroxyprogesterone
- 5- 11-Ketoprogesterone
- 6- Estrone