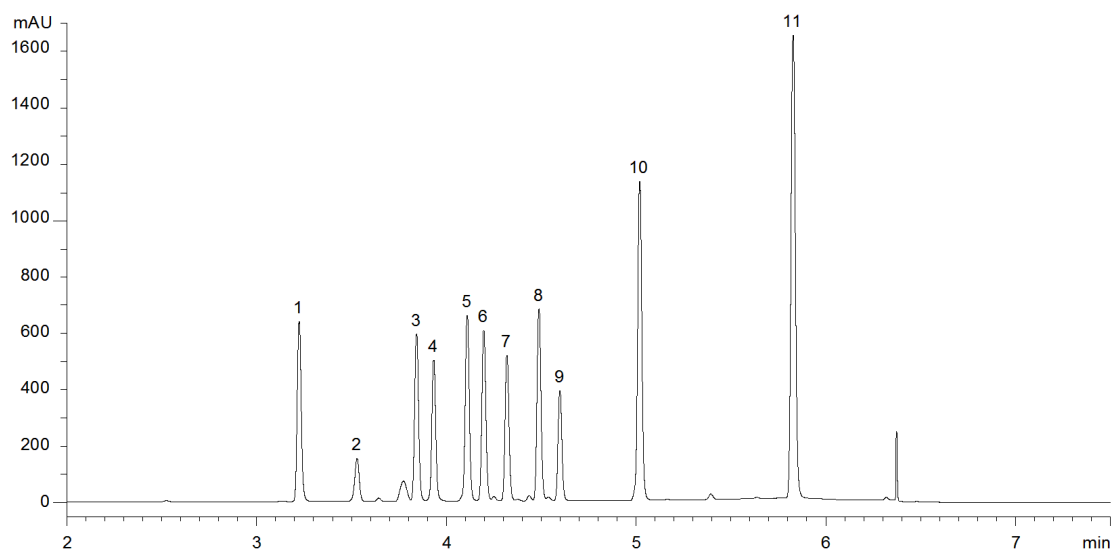


18672



Column: [Kinetex™ 2.6 µm C18 100 Å LC Column 150 x 4.6 mm](#)

Part No: [00F-4462-E0](#)

Dimensions: 150 x 4.6 mm ID

Elution Type: Gradient

Elution A: Water with 0.1% H₃PO₄

Elution B: Acetonitrile with 0.1% H₃PO₄

Gradient Profile:

Step No.	Time (min)	Pct A	Pct B
1	0	80	20
2	5	5	95

Flow Rate: 1 mL/min

Col. Temp: ambient

Detection: UV-Vis Abs.-Variable Wave.(UV) @ 214 nm (22°C)

Compounds:

- 1- Phenol
- 2- 4-Nitrophenol
- 3- 2-Chlorophenol
- 4- 2-Nitrophenol
- 5- 2,4-Dimethylphenol
- 6- 2,4-Dinitrophenol
- 7- 4-Chloro-3-Methylphenol
- 8- 2,4-Dichlorophenol
- 9- 2-Methyl-4,6-Dichlorophenol
- 10- 2,4,6-Trichlorophenol
- 11- Pentachlorophenol