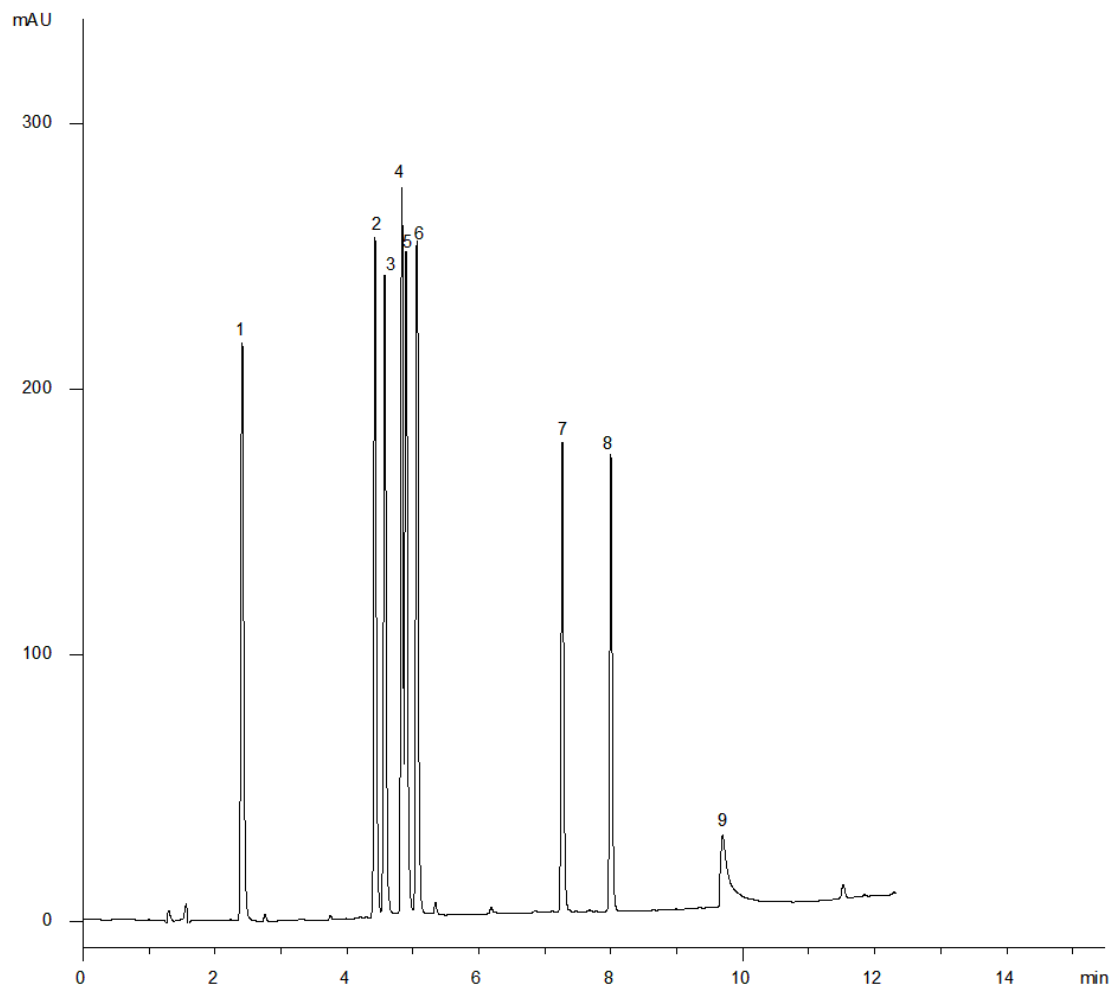


18667



Column: [Kinetex™ 2.6 µm PFP 100 Å LC Column 150 x 4.6 mm](#)

Part No: [00F-4477-E0](#)

Dimensions: 150 x 4.6 mm ID

Elution Type: Gradient

Elution A: 0.1% Formic acid

Elution B: 0.1% Formic acid in CH₃CN

Gradient Profile:

Step No.	Time (min)	Pct A	Pct B
1	0	95	5
2	12	35	65
3	12.01	95	5
4	17	95	5

Flow Rate: 1.2 mL/min

Col. Temp: 30 °C

Detection: UV-Vis Abs.-Diode Array (PDA) @ 254 nm (22°C)

Compounds:

- 1- Sulfanilamide; 2- Sulfacetamide; 3- Sulfadiazine; 4- Sulfathiazole; 5- Sulfapyridine;
- 6- Sulfamerazine; 7- Sulfamethoxazole; 8- Sulfaquinoxaline; 9- Sulfasalaxine