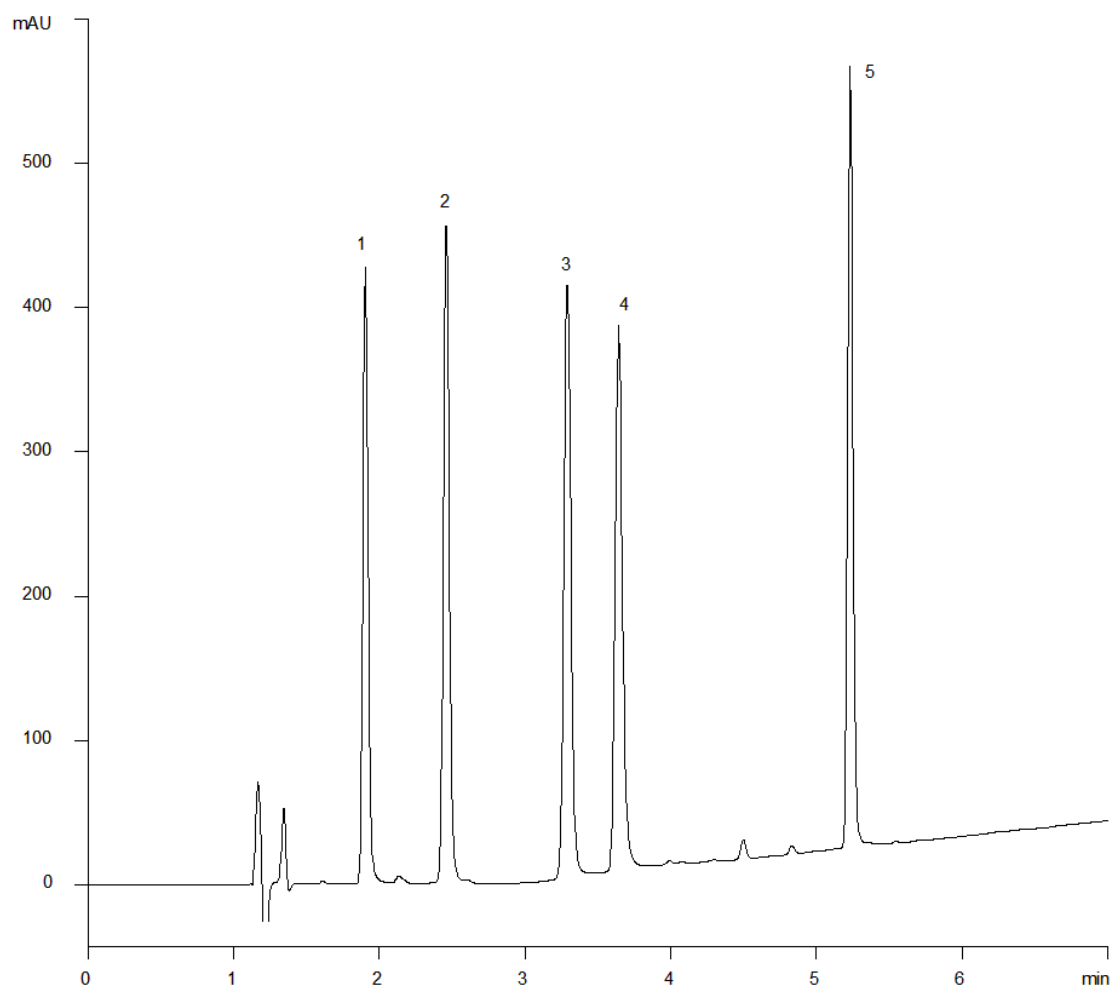


18655



**Column:** [Kinetex™ 2.6 µm C18 100 Å LC Column 150 x 4.6 mm](#)

**Part No:** [00F-4462-E0](#)

**Dimensions:** 150 x 4.6 mm ID

**Elution Type:** Gradient

**Elution A:** 0.1% Formic acid

**Elution B:** 0.1% Formic acid in CH<sub>3</sub>CN

**Gradient Profile:**

Step No.	Time (min)	Pct A	Pct B
1	0	85	15
2	1	85	15
3	7	65	35
4	7.01	85	15
5	11	85	15

**Flow Rate:** 1.2 mL/min

**Col. Temp:** 30 °C

**Detection:** UV-Vis Abs.-Diode Array (PDA) @ 230 nm (22°C)

**Compounds:**

- 1- Epigallocatechin;
- 2- Catechin;
- 3- Epicatechin;
- 4- Epigallocatechin gallate;
- 5- Epicatechin gallate