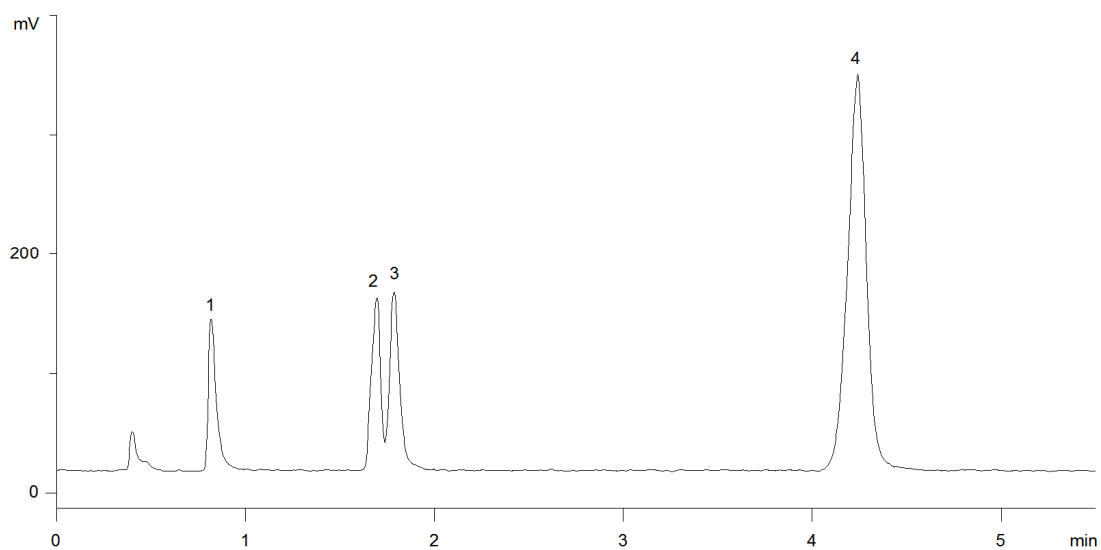


18653



Column: [Kinetex™ 2.6 µm HILIC 100 Å LC Column 50 x 2.1 mm](#)

Part No: [00B-4461-AN](#)

Dimensions: 50 x 2.1 mm ID

Elution Type: Isocratic

Elution A: 92.5/2.5/5 Acetonitrile/Water/100mM Ammonium formate pH 3.2

Gradient Profile:

Step No.	Time (min)	Pct A
1	0	100

Flow Rate: 0.4 mL/min

Col. Temp: 25 °C

Detection: ELSD @ nm (40°C)

Compounds:

- 1- alpha-Ketoglutaric acid
- 2- Pyroglutamic acid
- 3- Glutamic acid
- 4- GABA