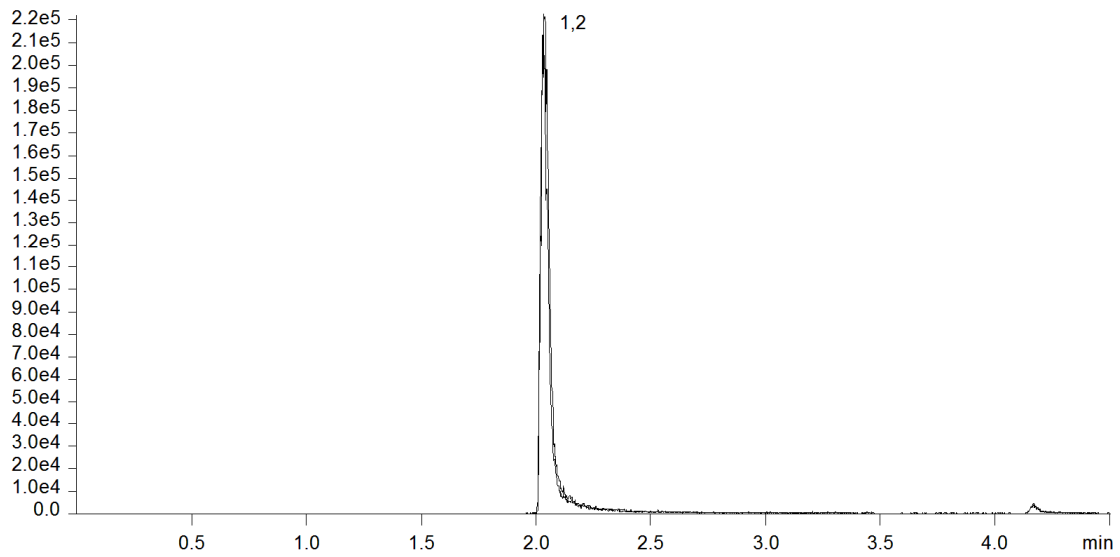


18645



**Column:** [Kinetex™ 2.6 µm C18 100 Å LC Column 50 x 2.1 mm](#)

**Part No:** [00B-4462-AN](#)

**Dimensions:** 50 x 2.1 mm ID

**Elution Type:** Gradient

**Elution A:** 0.1% Formic acid in H<sub>2</sub>O

**Elution B:** 0.1% Formic acid in ACN

**Gradient Profile:**

Step No.	Time (min)	Pct A	Pct B
1	0	97	3
2	0.25	97	3
3	2.75	5	95
4	3	5	95
5	3.01	97	3
6	4.5	97	3

**Flow Rate:** 500 µL/min

**Col. Temp:** 25 °C

**Detection:** Mass Spectrometer (MS) @ amu (22°C)

**Compounds:**

1- Methadone

2- Methadone D9