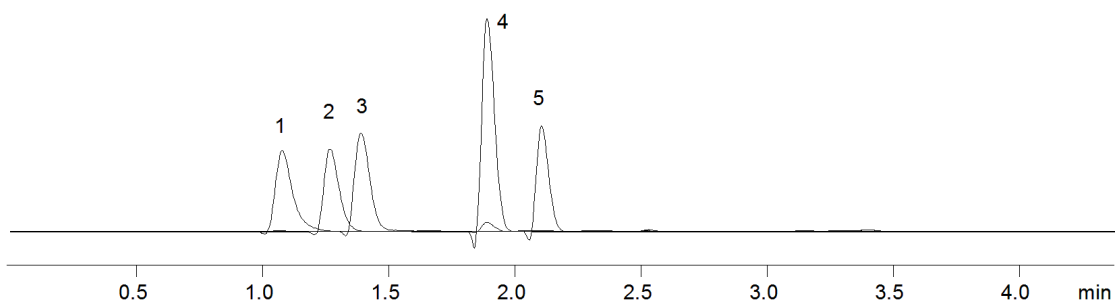


18641



Column: [Kinetex™ 2.6 µm PFP 100 Å LC Column 50 x 2.1 mm](#)

Part No: [00B-4477-AN](#)

Dimensions: 50 x 2.1 mm ID

Elution Type: Gradient

Elution A: 0.1% Formic acid and 5mM ammonium acetate in H₂O

Elution B: 0.1% Formic acid and 5mM ammonium acetate in methanol

Gradient Profile:

Step No.	Time (min)	Pct A	Pct B
1	0	80	20
2	2	5	95
3	2.5	5	95
4	2.51	80	20
5	4.4	80	20

Flow Rate: 400 µL/min

Col. Temp: 25 °C

Detection: Mass Spectrometer (MS) @ amu (22°C)

Compounds:

- 1- Sulfadiazine
- 2- Sulfathiazole
- 3- Sulfamerazine
- 4- Sulfamethoxazole
- 5- Sulfaquinoxaline