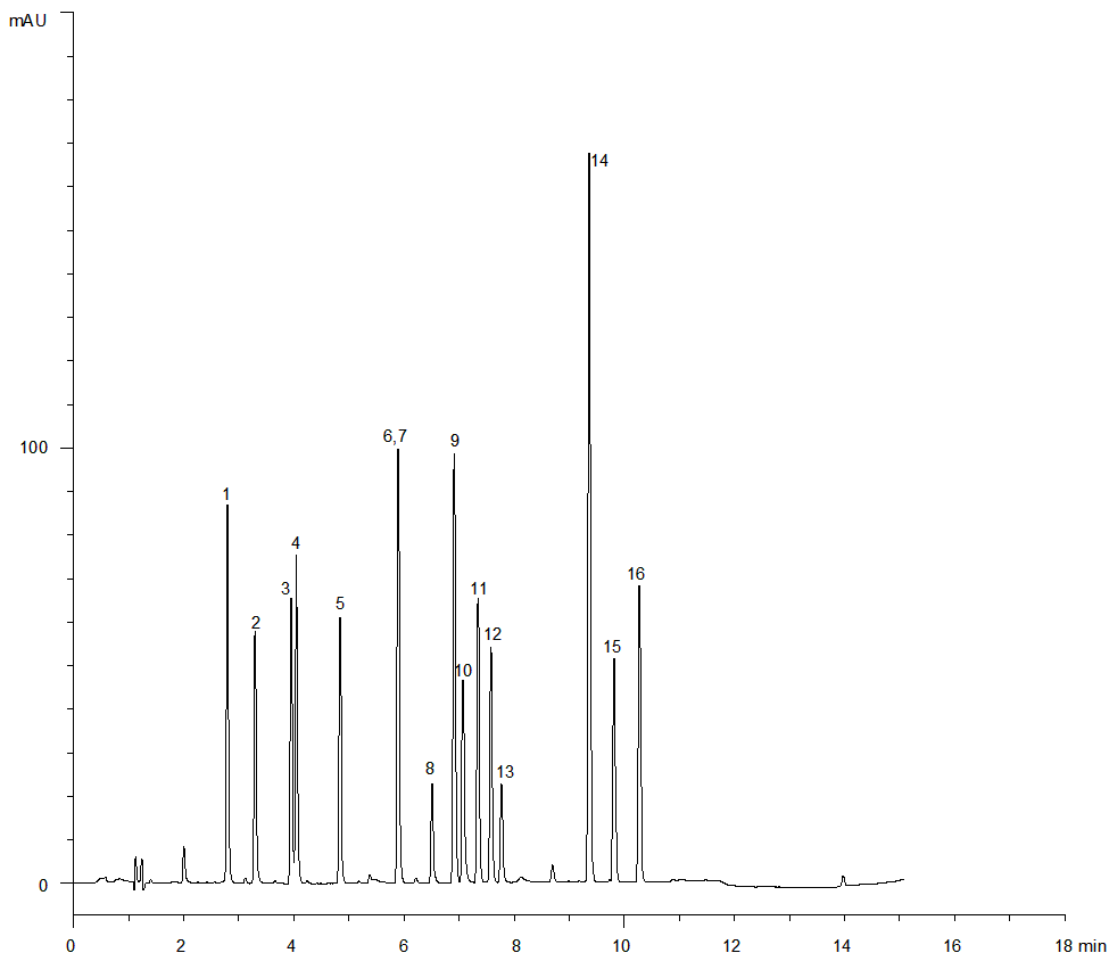


18636



Column: [Kinetex™ 2.6 µm PFP 100 Å LC Column 150 x 4.6 mm](#)

Part No: [00F-4477-E0](#)

Dimensions: 150 x 4.6 mm ID

Elution Type: Gradient

Elution A: Water

Elution B: CH₃CN

Gradient Profile:

Step No.	Time (min)	Pct A	Pct B
1	0	75	25
2	12	35	65
3	12.1	75	25
4	16	75	25

Flow Rate: 1.2 mL/min

Col. Temp: 30 °C

Detection: UV-Vis Abs.-Diode Array (PDA) @ 230 nm (22°C)

Compounds:

- 1- Triamcinolone; 2- Estriol; 3- Prednisone; 4- Cortisone; 5- Betamethasone; 6- Corticosterone; 7- Triamcinalone acetate; 8- 11-alpha-Hydroxyprogesterone; 9- Cortisone acetate; 10- Estradiol; 11- 21-Hydroxyprogesterone; 12- 11-Ketoprogesterone; 13- Estrone; 14- 17-Hydroxyprogesterone; 15- Deoxycorticosterone; 16 -Betamethasone Valerate