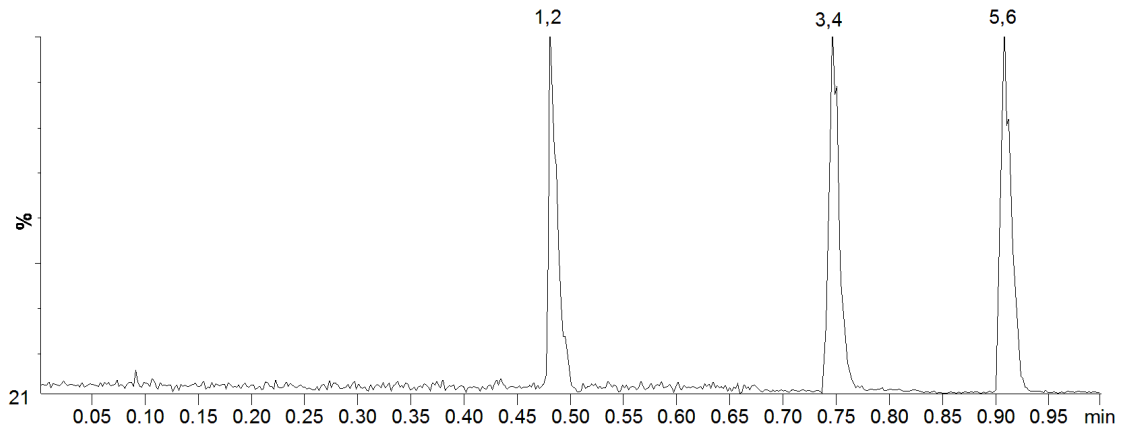


18621



Column: [Kinetex™ 2.6 μm C18 100 Å LC Column 50 x 2.1 mm](#)

Part No: [00B-4462-AN](#)

Dimensions: 50 x 2.1 mm ID

Elution Type: Gradient

Elution A: 0.1% Formic acid in H₂O

Elution B: 0.1% Formic acid in ACN

Gradient Profile:

Step No.	Time (min)	Pct A	Pct B
1	0	90	10
2	1	35	65
3	1.01	5	95
4	1.5	5	95
5	1.51	90	10
6	2.4	90	10

Flow Rate: 700 μL/min

Col. Temp: 25 °C

Detection: Mass Spectrometer (MS) @ amu (110°C)

Compounds:

- 1- 6-MAM
- 2- d3-6-MAM
- 3- PCP
- 4- d5-PCP
- 5- Methadone
- 6- d9-Methadone