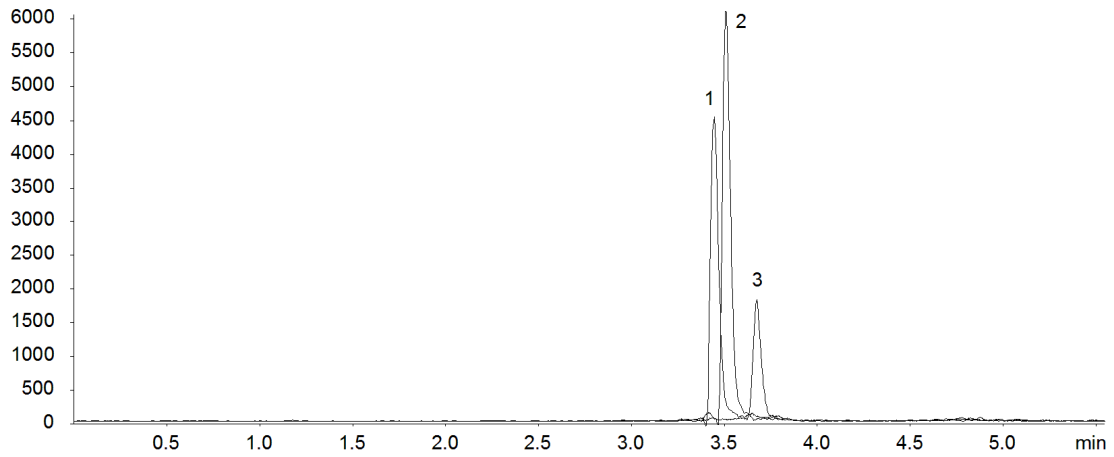


18614



Column: [Kinetex™ 2.6 µm PFP 100 Å LC Column 50 x 2.1 mm](#)

Part No: [00B-4477-AN](#)

Dimensions: 50 x 2.1 mm ID

Elution Type: Gradient

Elution A: 0.1% Formic acid and 5mM Ammonium Acetate in H₂O

Elution B: 0.1% Formic acid and 5mM Ammonium Acetate in Methanol

Gradient Profile:

Step No.	Time (min)	Pct A	Pct B
1	0	97	3
2	0.24	97	3
3	3.36	5	95
4	3.68	5	95
5	3.69	97	3
6	5.55	97	3

Flow Rate: 400 µL/min

Col. Temp: 25 °C

Detection: Mass Spectrometer (MS) @ amu (22°C)

Compounds:

- 1- Oxytetracycline
- 2- Tetracycline
- 3- Chlorotetracycline