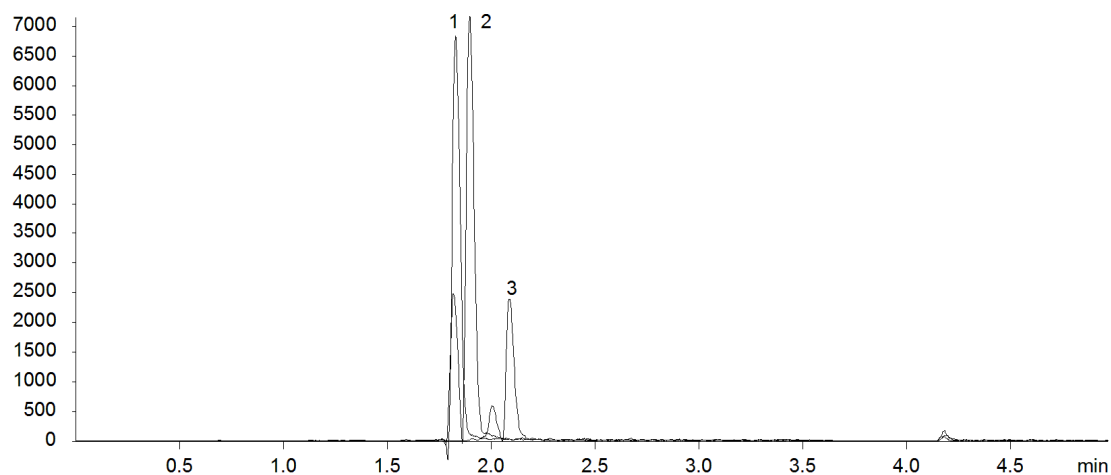


18613



Column: [Kinetex™ 2.6 µm C18 100 Å LC Column 50 x 2.1 mm](#)

Part No: [00B-4462-AN](#)

Dimensions: 50 x 2.1 mm ID

Elution Type: Gradient

Elution A: 0.1% Formic acid in H₂O

Elution B: 0.1% Formic acid in ACN

Gradient Profile:

| Step No. | Time (min) | Pct A | Pct B |
|----------|------------|-------|-------|
| 1 | 0 | 97 | 3 |
| 2 | 0.24 | 97 | 3 |
| 3 | 3.02 | 5 | 95 |
| 4 | 3.3 | 5 | 95 |
| 5 | 3.31 | 97 | 3 |
| 6 | 4.97 | 97 | 3 |

Flow Rate: 450 µL/min

Col. Temp: 25 °C

Detection: Mass Spectrometer (MS) @ amu (22°C)

Compounds:

- 1- Oxytetracycline
- 2- Tetracycline
- 3- Chlorotetracycline