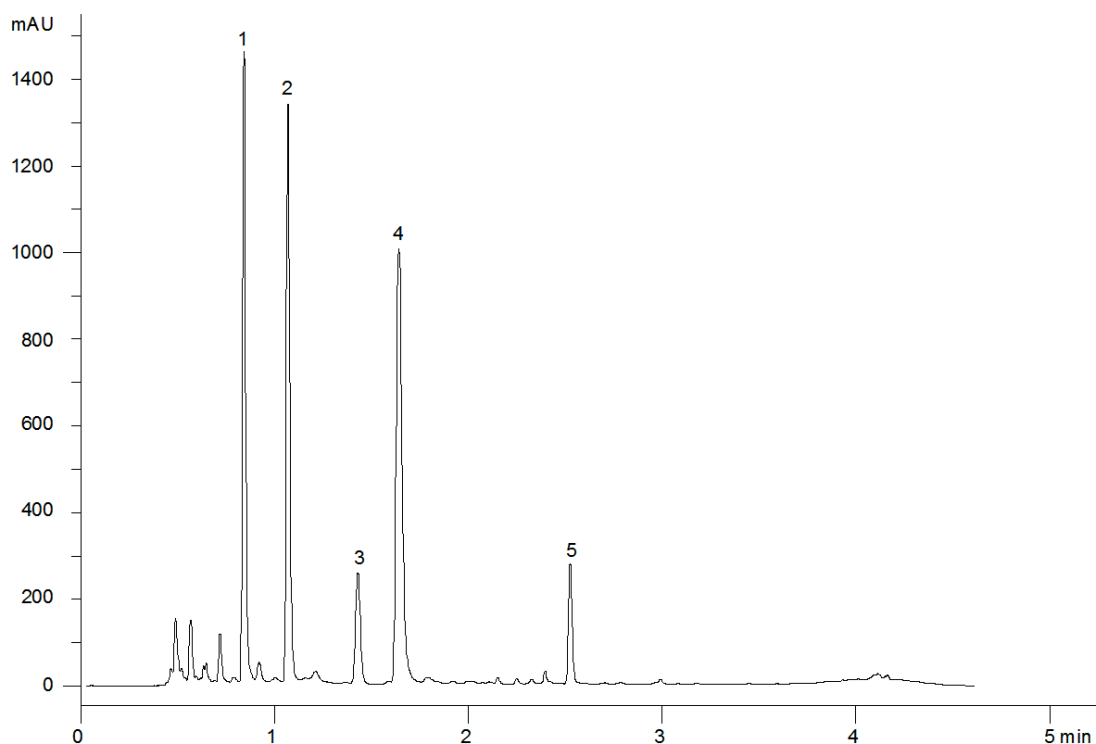


18550



Column: [Kinetex™ 2.6 µm C18 100 Å LC Column 100 x 4.6 mm](#)

Part No: [00D-4462-E0](#)

Dimensions: 100 x 4.6 mm ID

Elution Type: Gradient

Elution A: 0.1% phosphoric acid/water

Elution B: 0.1% phosphoric acid/acetonitrile

Gradient Profile:

Step No.	Time (min)	Pct A	Pct B
1	0	85	15
2	0	85	15
3	0.44	85	15
4	2.67	65	35
5	3.33	10	90
6	3.34	85	15
7	5.33	85	15

Flow Rate: 1.8 mL/min

Col. Temp: 30 °C

Detection: UV-Vis Abs.-Diode Array (PDA) @ 215 nm (22°C)

Compounds:

- 1- Epigallocatechin
- 2- Catechin
- 3- Epicatechin
- 4- Epigallocatechin gallate
- 5- Epicatechin gallate