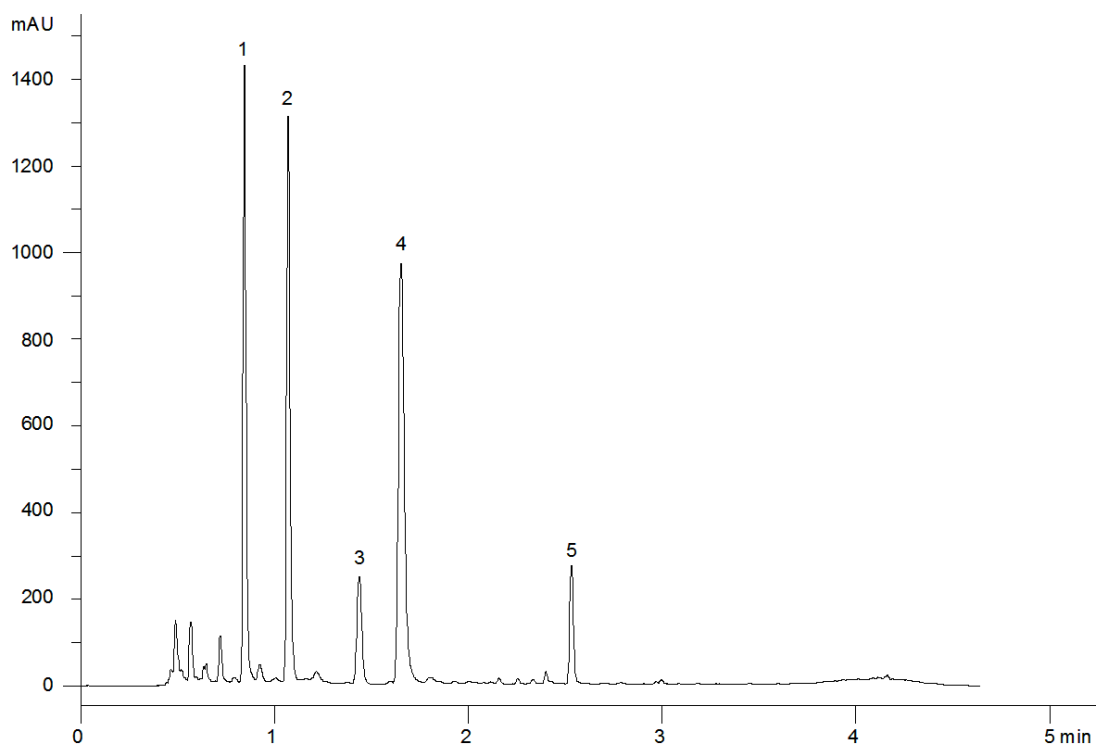


18549



**Column:** [Kinetex™ 2.6 µm C18 100 Å LC Column 100 x 4.6 mm](#)

**Part No:** [00D-4462-E0](#)

**Dimensions:** 100 x 4.6 mm ID

**Elution Type:** Gradient

**Elution A:** 0.1% Phosphoric acid/water

**Elution B:** 0.1% Phosphoric acid/acetonitrile

**Gradient Profile:**

| Step No. | Time (min) | Pct A | Pct B |
|----------|------------|-------|-------|
| 1        | 0          | 85    | 15    |
| 2        | 0.44       | 85    | 15    |
| 3        | 2.67       | 65    | 35    |
| 4        | 3.33       | 10    | 90    |
| 5        | 3.34       | 85    | 15    |
| 6        | 5.33       | 85    | 15    |

**Flow Rate:** 1.8 mL/min

**Col. Temp:** 30 °C

**Detection:** UV-Vis Abs.-Diode Array (PDA) @ 215 nm (22°C)

**Compounds:**

- 1- Epigallocatechin
- 2- Catechin
- 3- Epicatechin
- 4- Epigallocatechin gallate
- 5- Epicatechin gallate