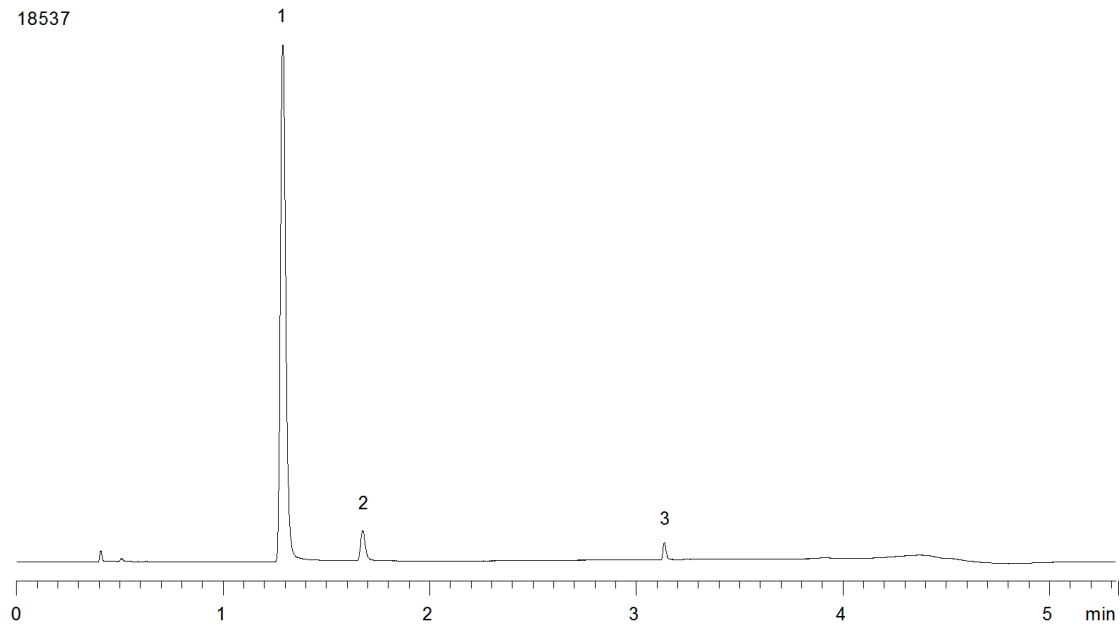


18537



**Column:** [Kinetex™ 2.6 µm C18 100 Å LC Column 100 x 4.6 mm](#)

**Part No:** [00D-4462-E0](#)

**Dimensions:** 100 x 4.6 mm ID

**Elution Type:** Gradient

**Elution A:** 0.1% phosphoric acid/water

**Elution B:** 0.1% phosphoric acid/acetonitrile

**Gradient Profile:**

Step No.	Time (min)	Pct A	Pct B
1	0	95	5
2	0.41	95	5
3	3.27	50	50
4	3.68	10	90
5	3.69	95	5
6	5.32	95	5

**Flow Rate:** 2.2 mL/min

**Col. Temp:** 50 °C

**Detection:** UV-Vis Abs.-Diode Array (PDA) @ 215 nm (22°C)

**Compounds:**

- 1- Acetaminophen
- 2- Doxylamine
- 3- Dextromethorphan