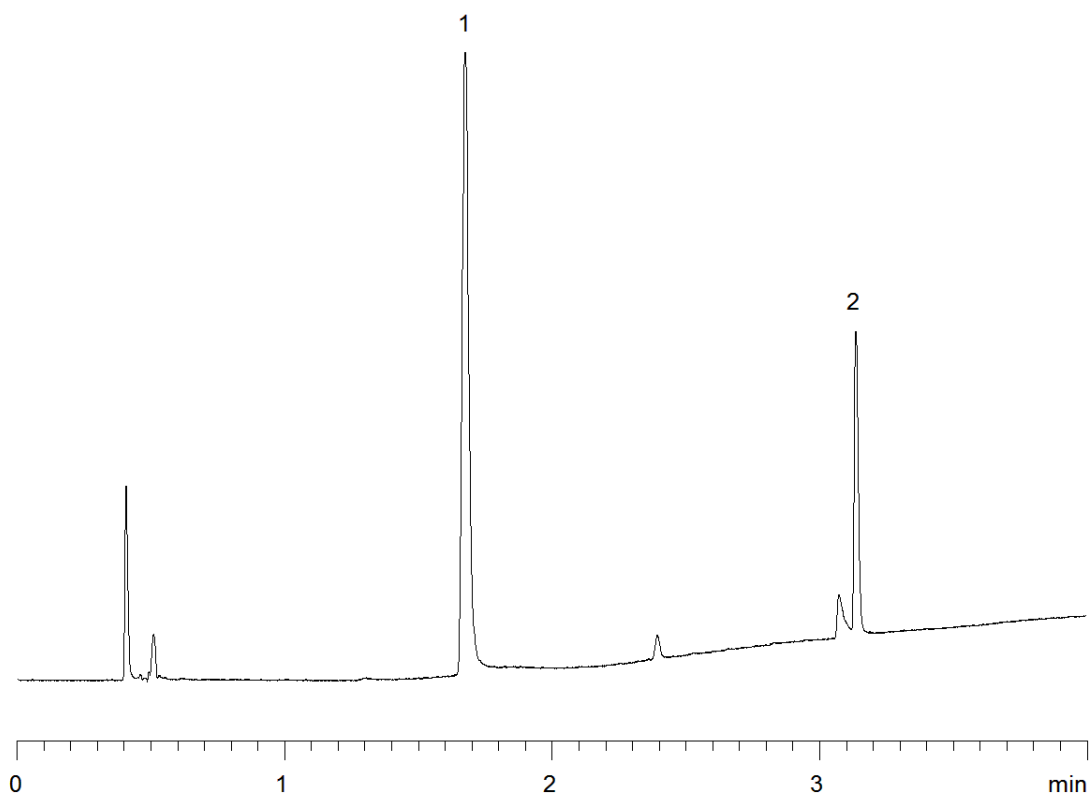


18536



Column: [Kinetex™ 2.6 µm C18 100 Å LC Column 100 x 4.6 mm](#)

Part No: 00D-4462-E0

Dimensions: 100 x 4.6 mm ID

Elution Type: Gradient

Elution A: 0.1% phosphoric acid/water

Elution B: 0.1% phosphoric acid/acetonitrile

Gradient Profile:

Step No.	Time (min)	Pct A	Pct B
1	0	95	5
2	0.41	95	5
3	3.27	50	50
4	3.68	10	90
5	3.69	95	5
6	5.32	95	5

Flow Rate: 2.2 mL/min

Col. Temp: 50 °C

Detection: UV-Vis Abs.-Diode Array (PDA) @ 215 nm (22°C)

Compounds:

1- Doxylamine

2- Dextromethorphan