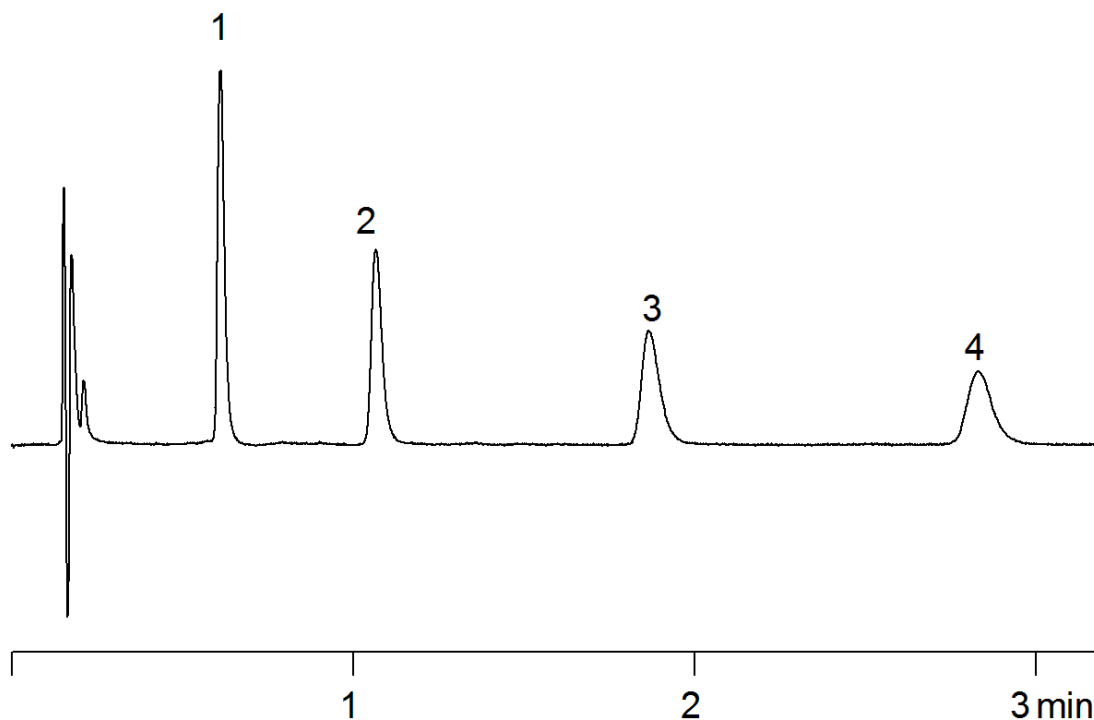


18520



Column: [Kinetex™ 2.6 µm PFP 100 Å LC Column 50 x 2.1 mm](#)

Part No: [00B-4477-AN](#)

Dimensions: 50 x 2.1 mm ID

Elution Type: Isocratic

Elution A: 0.1% Formic acid in Water

Elution B: 0.1% Formic acid in Acetonitrile

Gradient Profile:

Step No.	Time (min)	Pct A	Pct B
1	4	70	30

Flow Rate: 0.8 mL/min

Col. Temp: 25 °C

Detection: UV-Vis Abs.-Variable Wave.(UV) @ 280 nm (25°C)

Compounds:

- 1- 4-Chlorophenoxyacetic acid
- 2- 2,4-Dichlorophenoxyacetic acid
- 3- 2,4,5-Trichlorophenoxyacetic acid
- 4- 2 (2,4,5-Trichlorophenoxy)propionic acid