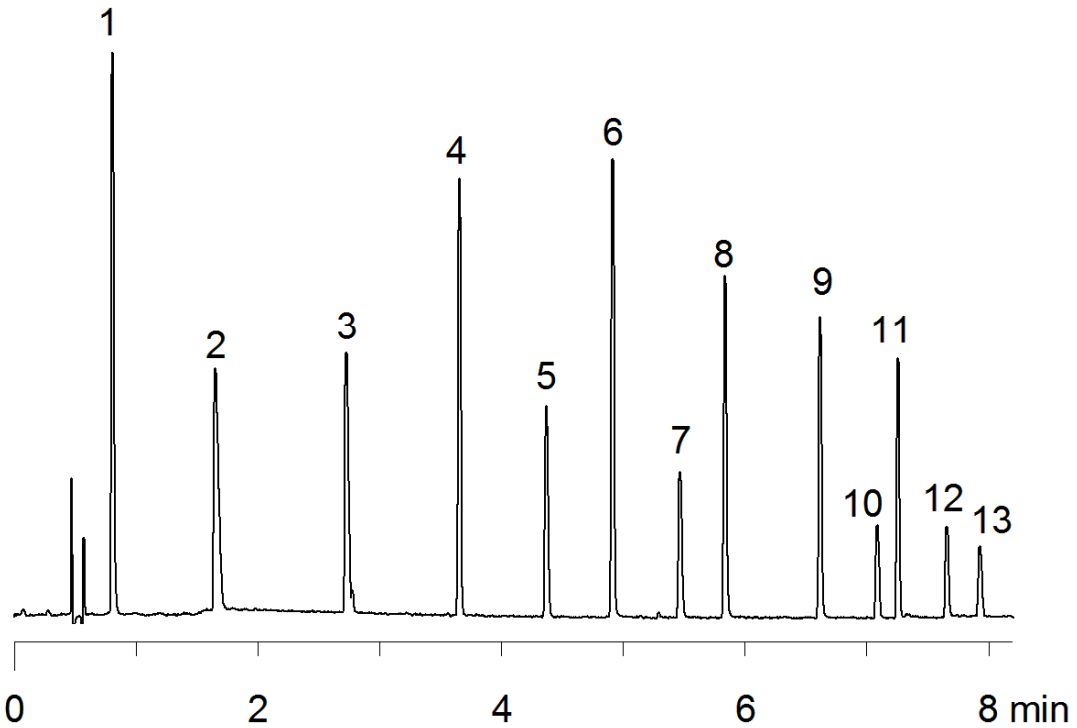


18277



Column: [Kinetex™ 2.6 μm C18 100 Å LC Column 100 x 4.6 mm](#)

Part No: [00D-4462-E0](#)

Dimensions: 100 x 4.6 mm ID

Elution Type: Gradient

Elution A: water

Elution B: acetonitrile

Gradient Profile:

Step No.	Time (min)	Pct A	Pct B
1	0	95	5
2	0.65	95	5
3	7.01	5	95
4	8.2	5	95
5	8.21	95	5
6	10.97	95	5

Flow Rate: 2.1 mL/min

Col. Temp: 45 °C

Detection: UV-Vis Abs.-Diode Array (PDA) @ 258 nm (25°C)

Compounds:

- 1- Acetone
- 2- 2-Butanone
- 3- 2-Pentanone
- 4- Acetophenone
- 5- 2-Heptanone
- 6- Butyrophenone
- 7- 2-Nonanone
- 8- Hexanophenone
- 9- Octanophenone
- 10- 2-Tridecanone
- 11- Decanophenone
- 12- 2-Pentadecanone
- 13- 2-Hexadecanone