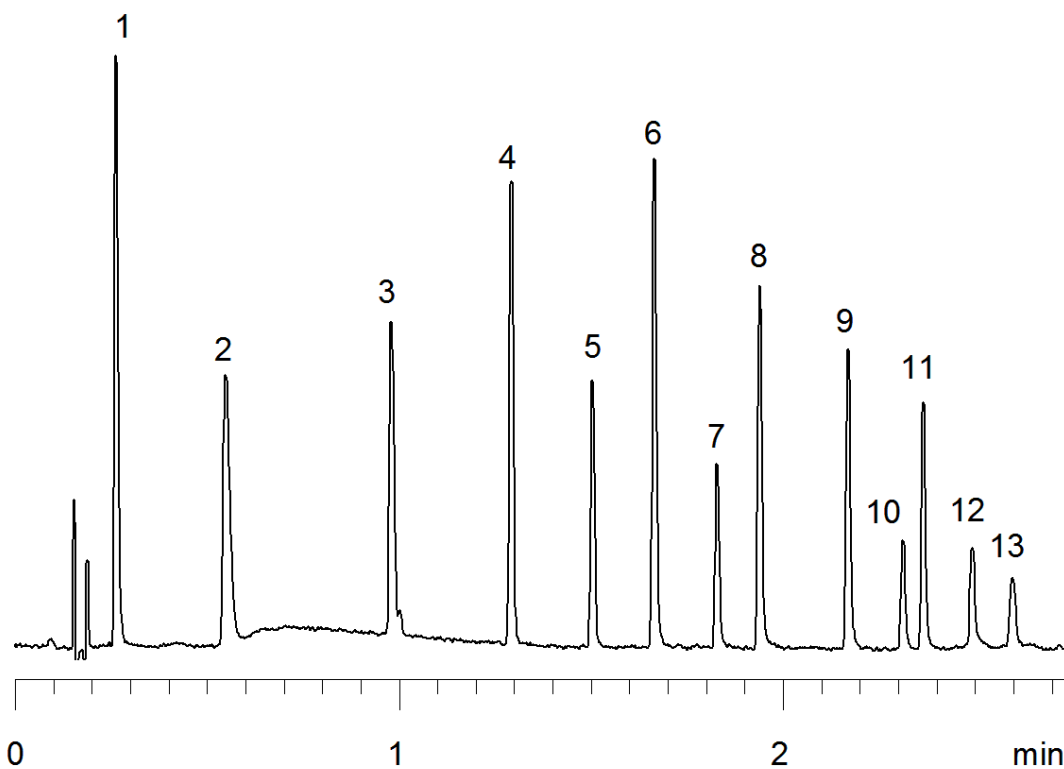


18276



Column: [Kinetex™ 2.6 µm C18 100 Å LC Column 50 x 4.6 mm](#)

Part No: [00B-4462-E0](#)

Dimensions: 50 x 4.6 mm ID

Elution Type: Gradient

Elution A: water

Elution B: acetonitrile

Gradient Profile:

Step No.	Time (min)	Pct A	Pct B
1	0	95	5
2	0.23	95	5
3	2.19	5	95
4	2.75	5	95
5	2.76	95	5
6	3.61	95	5

Flow Rate: 3.4 mL/min

Col. Temp: 45 °C

Detection: UV-Vis Abs.-Diode Array (PDA) @ 258 nm (25°C)

Compounds:

- 1- Acetone
- 2- 2-Butanone
- 3- 2-Pentanone
- 4- Acetophenone
- 5- 2-Heptanone
- 6- Butyrophenone
- 7- 2-Nonanone
- 8- Hexanophenone
- 9- Octanophenone
- 10- 2-Tridecanone
- 11- Decanophenone
- 12- 2-Pentadecanone
- 13- 2-Hexadecanone