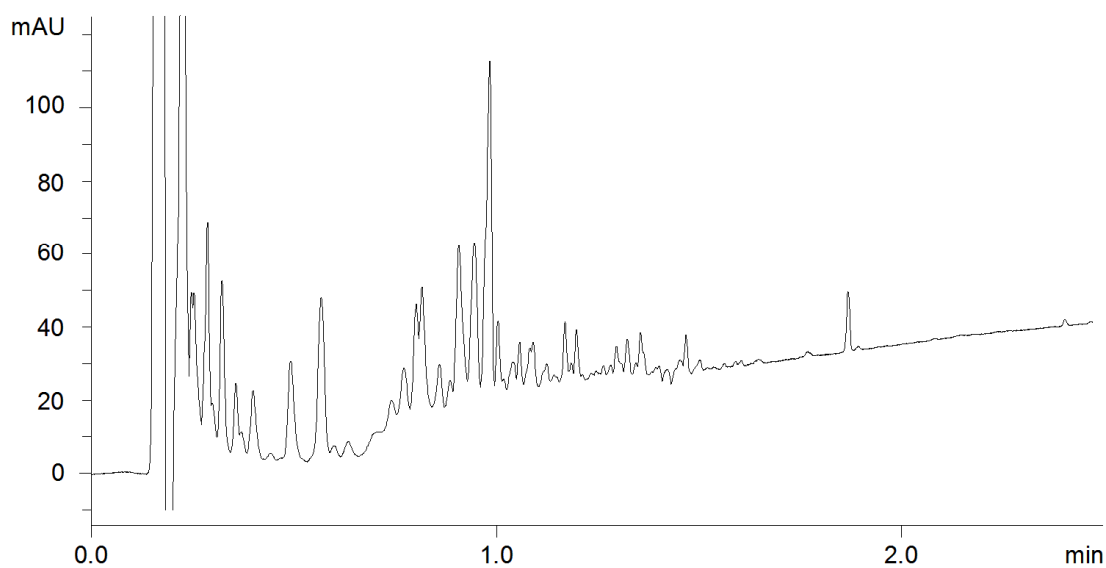


18275



**Column:** [Kinetex™ 2.6 µm C18 100 Å LC Column 50 x 4.6 mm](#)

**Part No:** [00B-4462-E0](#)

**Dimensions:** 50 x 4.6 mm ID

**Elution Type:** Gradient

**Elution A:** water with 0.1% formic acid

**Elution B:** acetonitrile with 0.1% formic acid

**Gradient Profile:**

Step No.	Time (min)	Pct A	Pct B
1	0	95	5
2	0.2	95	5
3	2.47	5	95
4	2.48	95	5
5	3.47	95	5

**Flow Rate:** 3 mL/min

**Col. Temp:** 45 °C

**Detection:** UV-Vis Abs.-Diode Array (PDA) @ 220 nm (25°C)

**Compounds:**

1- Human urine