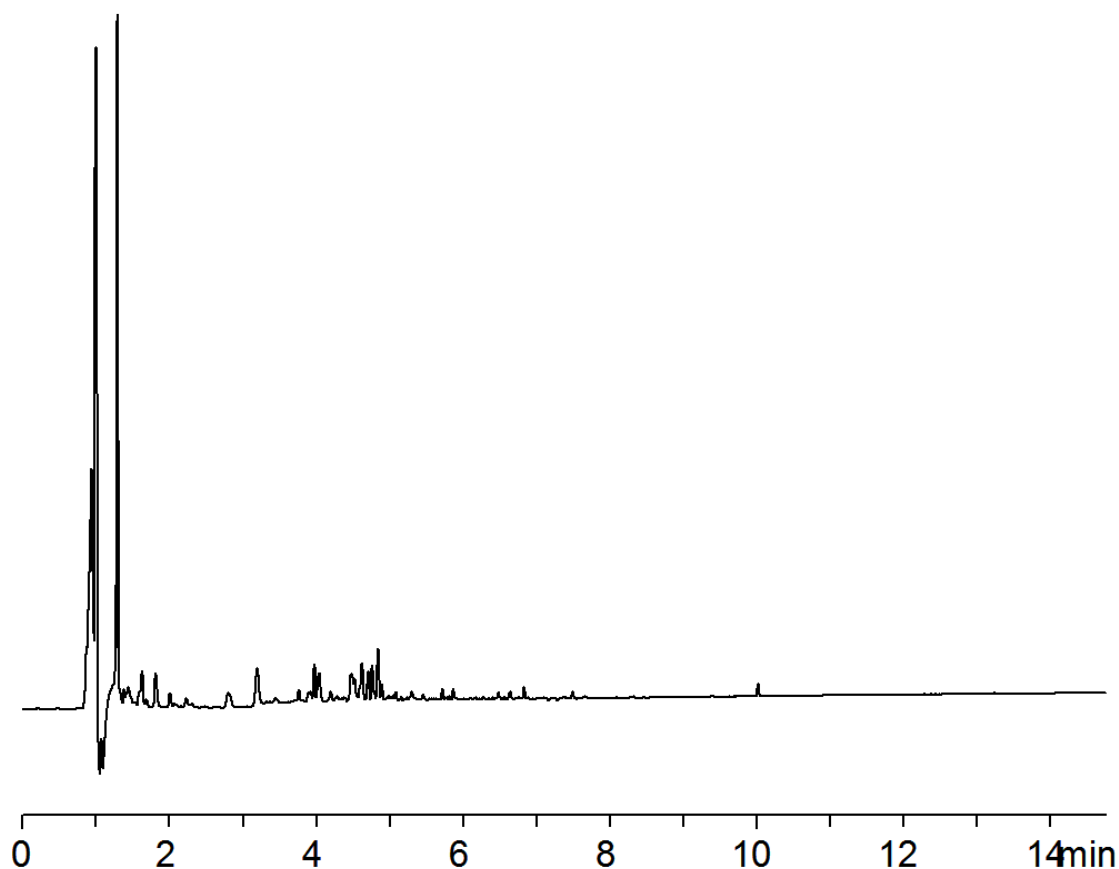


18274



Column: [Kinetex™ 2.6 µm C18 100 Å LC Column 150 x 4.6 mm](#)

Part No: [00F-4462-E0](#)

Dimensions: 150 x 4.6 mm ID

Elution Type: Gradient

Elution A: Water with 0.1% ormic acid

Elution B: Acetonitrile with 0.1% formic acid

Gradient Profile:

Step No.	Time (min)	Pct A	Pct B
1	0	95	5
2	1.4	95	5
3	14.75	5	95
4	14.76	95	5
5	20.75	95	5

Flow Rate: 1.5 mL/min

Col. Temp: 45 °C

Detection: UV-Vis Abs.-Diode Array (PDA) @ 220 nm (25°C)

Compounds:

1- Human urine