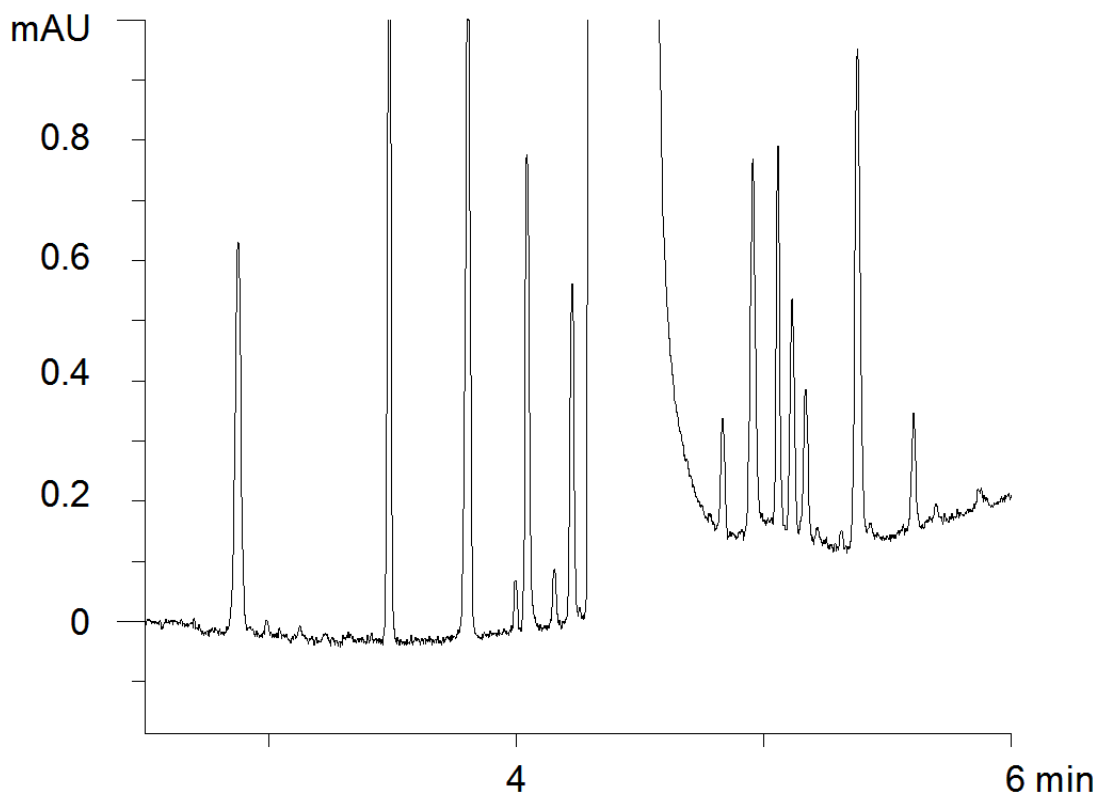


18262



Column: [Kinetex™ 2.6 µm C18 100 Å LC Column 150 x 4.6 mm](#)

Part No: [00F-4462-E0](#)

Dimensions: 150 x 4.6 mm ID

Elution Type: Gradient

Elution A: water

Elution B: acetonitrile

Gradient Profile:

Step No.	Time (min)	Pct A	Pct B
1	0	95	5
2	1.16	95	5
3	14.51	5	95
4	14.6	5	95
5	14.61	95	5
6	20.42	95	5

Flow Rate: 1.5 mL/min

Col. Temp: 45 °C

Detection: UV-Vis Abs.-Variable Wave.(UV) @ 254 nm (25°C)

Compounds:

- 1- Pyridine; 2 – Acetaminophen; 3- Pindolol; 4- Quinine; 5- Acebutolol; 6- Chlorpheniramine; 7- Triprolidine; 8- Prednisolone; 9- Nortriptyline; 10 - 4-Chlorobenzoic acid; 11- 5-Methyl-2-hydroxy benzaldehyde; 12- 4-Chlorocinnamic acid; 13- Diazepam; 14- Diflunisal; 15- Niflumic acid; 16- Hexanophenone