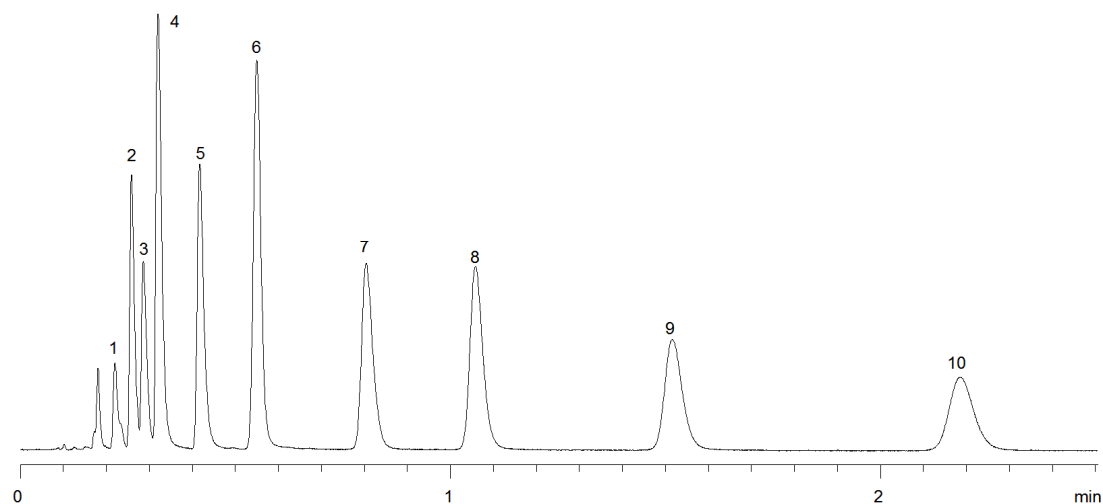


18246



**Column:** [Kinetex™ 2.6 µm C18 100 Å LC Column 50 x 2.1 mm](#)

**Part No:** [00B-4462-AN](#)

**Dimensions:** 50 x 2.1 mm ID

**Elution Type:** Isocratic

**Elution A:** 20 mM Potassium Phosphate pH 7

**Elution B:** 50:50 MeOH and ACN

**Gradient Profile:**

| Step No. | Time (min) | Pct A | Pct B |
|----------|------------|-------|-------|
| 1        | 0          | 48    | 52    |

**Flow Rate:** 1.2 mL/min

**Col. Temp:** 40 °C

**Detection:** UV-Vis Abs.-Variable Wave.(UV) @ 254 nm (22°C)

**Compounds:**

- 1- Tianeptine
- 2- Desmethyldoxepin
- 3- Protriptyline
- 4- Desipramine
- 5- Imipramine
- 6- Amoxapine
- 7- Doxepin
- 8- Nortriptyline
- 9- Amitriptyline
- 10- Clomipramine