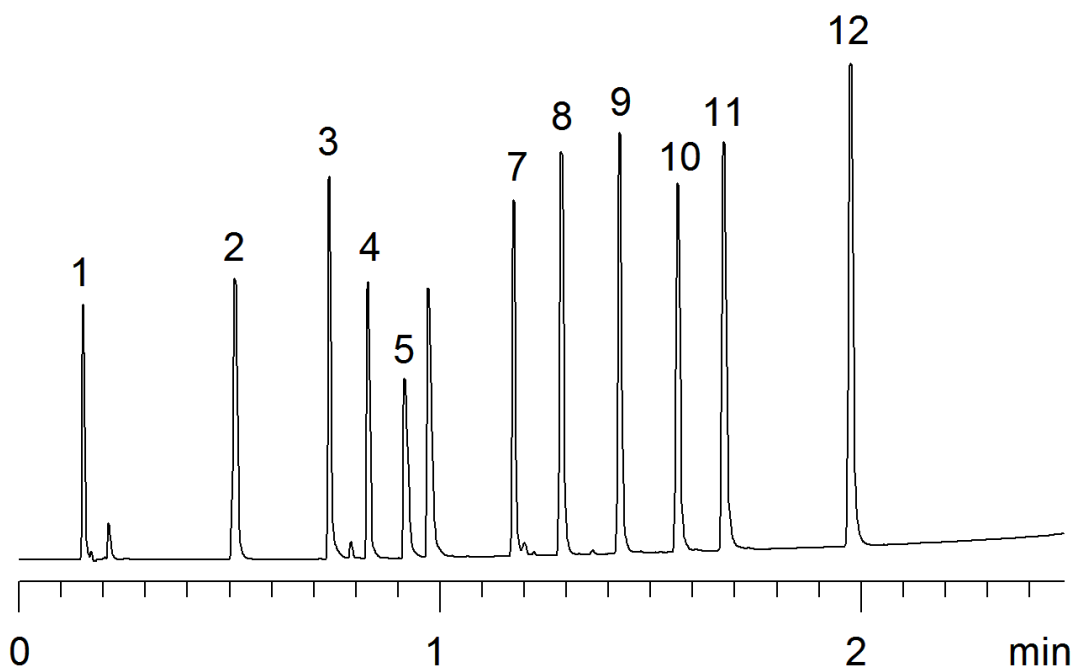


18225



Column: [Kinetex™ 2.6 µm C18 100 Å LC Column 50 x 4.6 mm](#)

Part No: [00B-4462-E0](#)

Dimensions: 50 x 4.6 mm ID

Elution Type: Gradient

Elution A: water w/ 0.1% formic acid

Elution B: acetonitrile w/ 0.1% formic acid

Gradient Profile:

Step No.	Time (min)	Pct A	Pct B
1	0	95	5
2	0.2	95	5
3	2.47	5	95
4	2.48	95	5
5	3.47	95	5

Flow Rate: 2.94 mL/min

Col. Temp: 45 °C

Detection: UV-Vis Abs.-Variable Wave.(UV) @ 254 nm (25°C)

Compounds:

- 1- Pyridine
- 2- Acetaminophen
- 3- Quinine
- 4- Acebutolol
- 5- Chlorpheniramine
- 6- Triprolidine
- 7- Prednisolone
- 8- 4-Chlorobenzoic acid
- 9- 4-Chlorocinnamic acid
- 10- Diazepam
- 11- Diflunisal
- 12- Hexanophenone