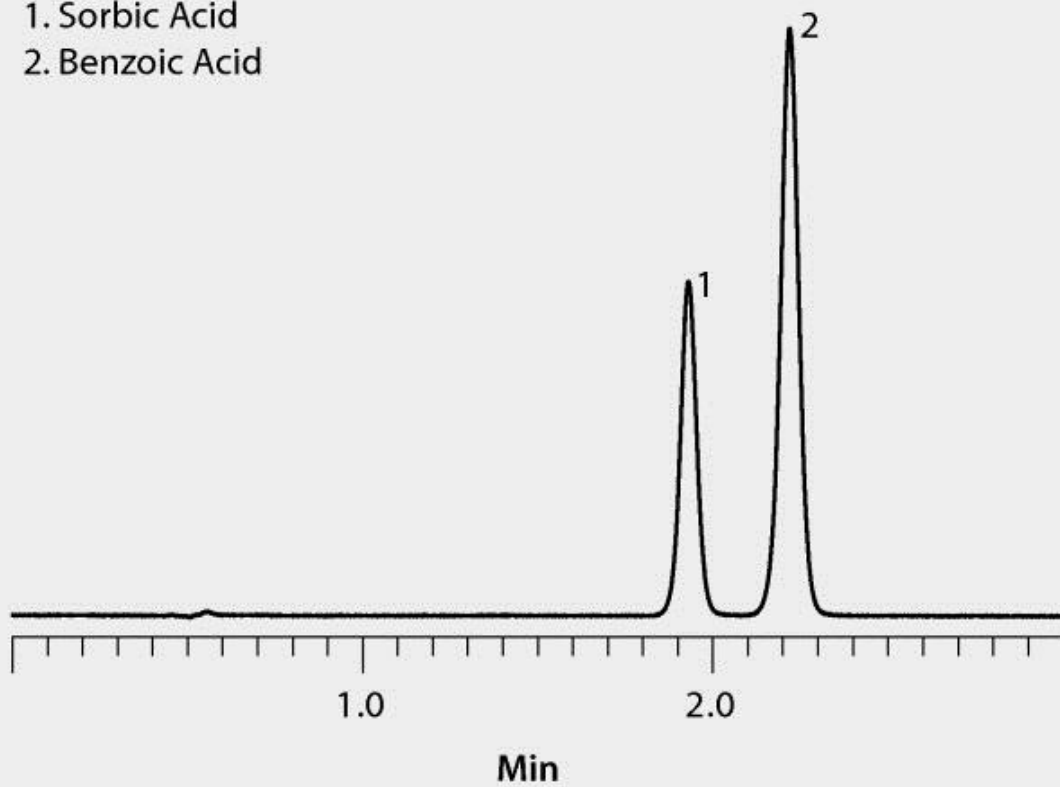


- 1. Sorbic Acid
- 2. Benzoic Acid



test parameters	column: Ascentis Express RP-Amide, 5 cm x 3 mm I.D., 2.7 µm particles (53916-U)
	mobile phase: (A) 10 mM ammonium phosphate monobasic, pH 2.5 with phosphoric acid; (B) ethanol; (75:25, A:B)
	flow rate: 0.4 mL/min pressure: 138 bar (2000 psi) column, 248 bar (3600 psi) total column temp.: 55 °C
	detector: UV, 215 nm
	injection: 1 µL