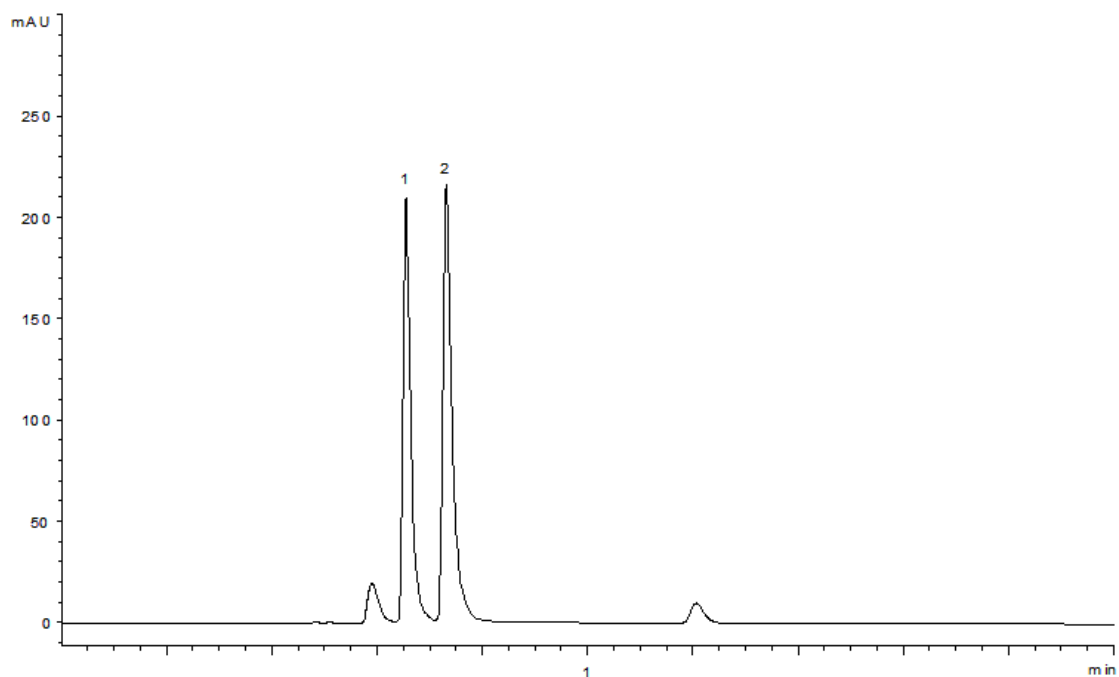


19984



Column: [Kinetex 2.6u Phenyl-Hexyl 100A](#)

Part No: [00B-4495-E0](#)

Dimensions: 50 x 4.6 mm ID

Elution Type: Isocratic

Elution A: 20mM Potassium Phosphate pH 2.5

Elution B: Acetonitrile

Gradient Profile:

Step No.	Time (min)	Pct A	Pct B
1	2	97	3

Flow Rate: 1 mL/min

Col. Temp: ambient

Detection: UV-Vis Abs. - Variable Wave. @ 210 nm (22°C)

Compounds:

1-Maleic Acid; 2-Fumaric Acid