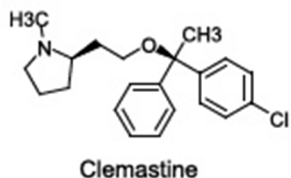
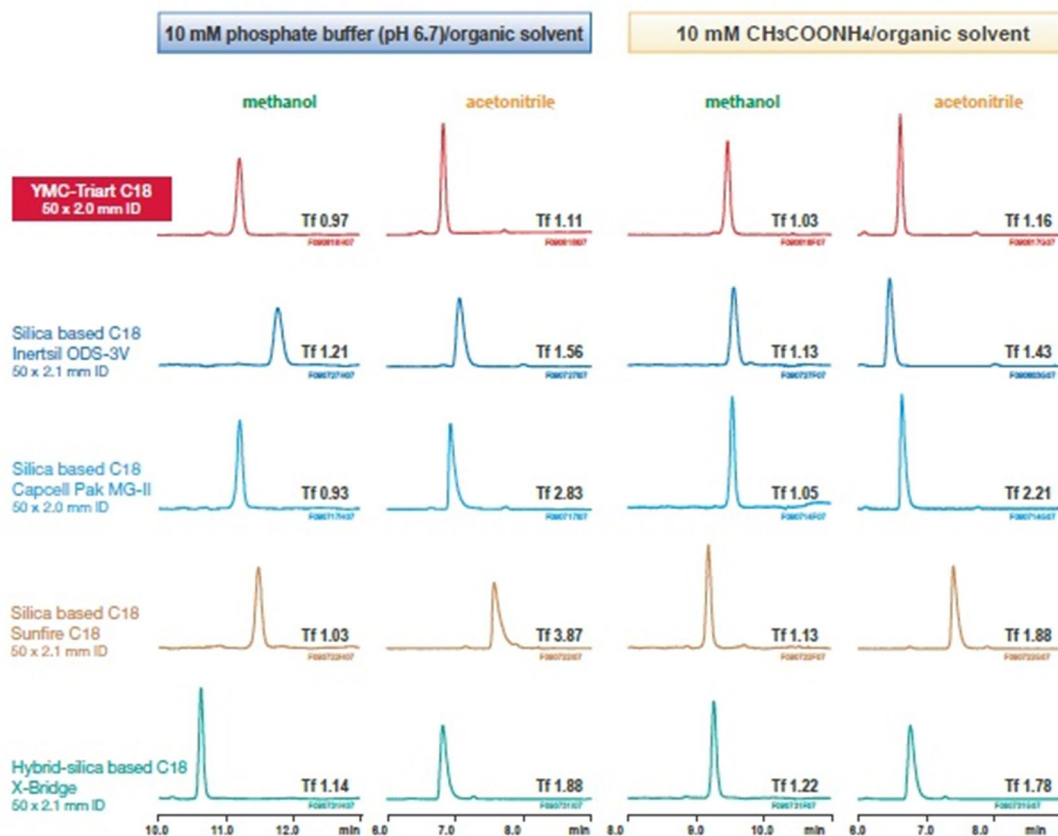


Comparison of clemastine analysis with conventional columns



Column:	5 μm, 50 x 2.0 or 50 x 2.1 mm ID
Eluent:	A) 10 mM KH ₂ HPO ₄ -K ₂ HPO ₄ (pH 6.7) or CH ₃ COONH ₄ B) methanol or acetonitrile 5-90% B(0-10 min), 90% B(10-15 min)
Flow rate:	0.2 ml/min
Temperature:	25 °C
Detection:	UV at 230 nm

Clemastine is a well-known basic compound which readily exhibits peak tailing with conventional ODS columns. YMC-Triart provides sharp separations with many different buffer/ solvent compositions.