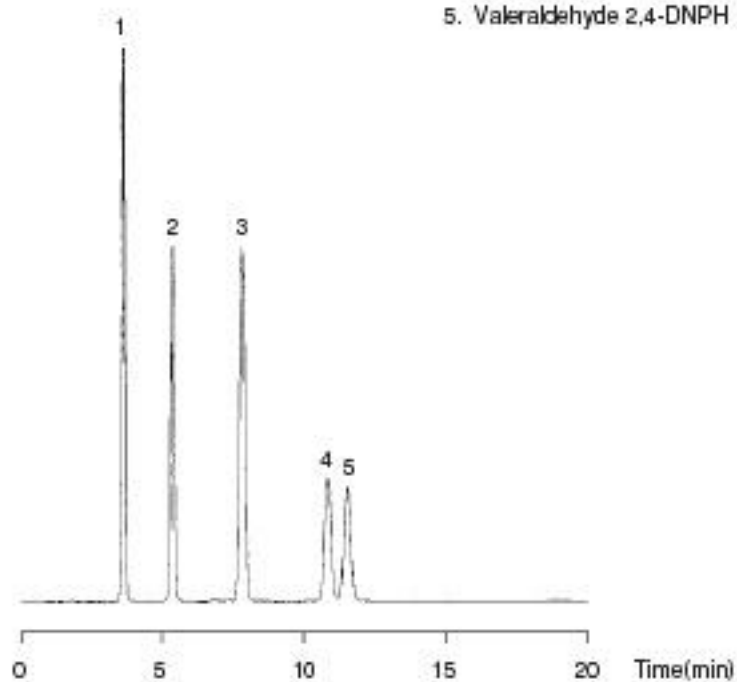


Aldehydes (2,4-DNPH Derivatives)

- Sample: 1. Diphenylamine
2. Acetaldehyde 2,4-DNPH
3. Propionaldehyde 2,4-DNPH
4. Butyraldehyde 2,4-DNPH
5. Valeraldehyde 2,4-DNPH



Column : Kaseisorb LC ODS 2000-3 4.6mm I.D. X 100mm
Mobile Phase : THF/CH₃CN/H₂O=10/45/45
Detection : UV360nm
Flow Rate : 1.0ml/min
Temperature : 40°C